



META META SLIM Wall-mounted single-lever mixer without drain - Brushed Light Gold

META

36 860 662 Product version from 9/1/2021



- 7-1/2" Projection
- Rigid spout
- Round aerated stream
- Spout hole diameter 1-1/2"
- Hole diameter single-lever mixer 2-1/4"
- 2-1/8" diameter flange for spout
- Diameter flange for mixer 3-1/8"
- Water flow rate limited to max. 1.2 gpm
- lead-free
- This product can help a building meet the requirements of Green Building Rating Systems, e.g. LEED®, BREEAM®, DGNB (ADA)

(ADA)

	Brushed Light Gold	36 860 662-27 0010
	Chrome	36 860 662-00 0010
	Brushed Platinum	36 860 662-06 0010
	Dark Chrome	36 860 662-19 0010
	Light gold	36 860 662-26 0010
	Matte Black	36 860 662-33 0010
	Brushed Dark Brass	36 860 662-39 0010
	Brushed Bronze	36 860 662-42 0010
	Brushed Champagne (22kt Gold)	36 860 662-46 0010
	Champagne (22kt Gold)	36 860 662-47 0010
	Brushed Chrome	36 860 662-93 0010
	Brushed Dark Platinum	36 860 662-99 0010

Required article



- Rough for wall-mounted faucet -**35 860 970-90 0010
- Min. rough in depth 3-1/8"
 - Rough can be rotated to position the lever on top or to the left of the spout.
 - Max. rough in depth 3-3/4"

META META SLIM Wall-mounted single-lever mixer without drain - Brushed Light Gold

36 860 662

Product version from 9/1/2021

META

36 860 662

Product version from 9/1/2021

mm [inches]

Codes & Standards

ADA	California Energy Commission (CEC)	NSF372	NSF61
-----	------------------------------------	--------	-------

Certificates and sustainability

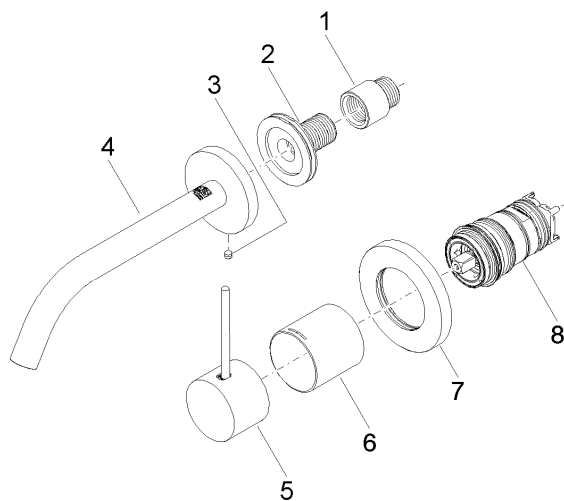
IAPMO_N-4976	IAPMO_6397
--------------	------------

Model/program/technical modifications and error excepted

For more information see: www.dornbracht.com + 49 (0) 2371 8899 900 mail@dornbracht.com

2/3

7/17/2025



Spare parts list

Number	Item Number	Designation	Number of units	Lead time
1	09 24 03 072 10 90	nipple	1.00	2
8	90 15 05 044 02 90	cartridge	1.00	2
7	90 27 62 011 00-27	rosette	1.00	20
4	90 28 22 323 01-27	spout	1.00	20
5	90 20 66 022 00-27	handle	1.00	20
3	09 31 11 112 90	pin	1.00	60
6	09 11 02 336-27	sleeve	1.00	60
2	90 24 03 280 00 90	nipple	1.00	2