

# META META SLIM Wall-mounted single-lever mixer without drain - Champagne (22kt Gold)

META

36 860 662 Product version from 9/1/2021



- 7-1/2" Projection
- Rigid spout
- Round aerated stream
- Spout hole diameter 1-1/2"
- Hole diameter single-lever mixer 2-1/4"
- 2-1/8" diameter flange for spout
- Diameter flange for mixer 3-1/8"
- Water flow rate limited to max. 1.2 gpm
- lead-free
- This product can help a building meet the requirements of Green Building Rating Systems, e.g. LEED®, BREEAM®, DGNB

(ADA)

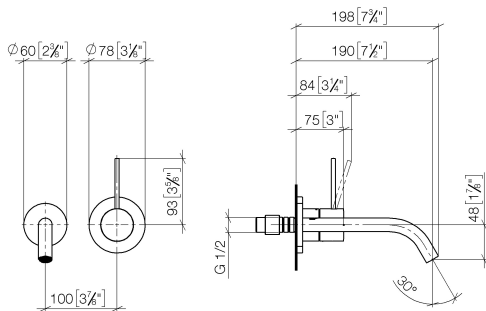
	Champagne (22kt Gold)	36 860 662-47 0010
	Chrome	36 860 662-00 0010
	Brushed Platinum	36 860 662-06 0010
	Dark Chrome	36 860 662-19 0010
	Light gold	36 860 662-26 0010
	Brushed Light Gold	36 860 662-27 0010
	Matte Black	36 860 662-33 0010
	Brushed Bronze	36 860 662-42 0010
	Brushed Champagne (22kt Gold)	36 860 662-46 0010
	Brushed Chrome	36 860 662-93 0010
	Brushed Dark Platinum	36 860 662-99 0010




META META SLIM Wall-mounted single-lever mixer without drain - Champagne  
(22kt Gold)

META

36 860 662 Product version from 9/1/2021  
mm [inches]



Codes & Standards

ADA	California Energy Commission (CEC)	EPA WaterSense	NSF372
NSF61	WaterSense		

Certificates and sustainability

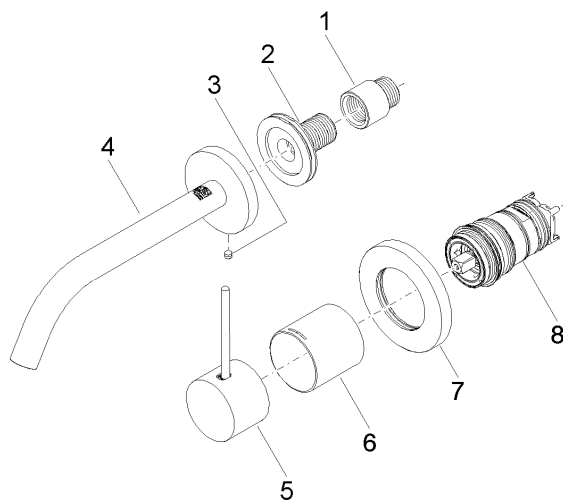
IAPMO_N-4976	IAPMO_6397	IAPMO_8834
--------------	------------	------------

## META META SLIM Wall-mounted single-lever mixer without drain - Champagne (22kt Gold)

META

36 860 662 Product version from 9/1/2021

Parts for other  
finishes can be found  
here: [Chrome](#)



### Spare parts list

Number	Item Number	Designation	Number of units	Lead time
4	90 28 22 323 01-47	spout	1.00	30
3	09 31 11 112 90	pin	1.00	60
8	90 15 05 044 02 90	cartridge	1.00	2
2	90 24 03 280 00 90	nipple	1.00	2
7	90 27 62 011 00-47	rosette	1.00	30
5	90 20 66 022 00-47	handle	1.00	30
6	09 11 02 336-47	sleeve	1.00	60
1	09 24 03 072 10 90	nipple	1.00	2