



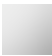





CL.1 Wall-mounted single-lever mixer without drain - Chrome

36 860 705    Product version from 7/1/2023



- 7-3/4" Projection
- Rigid spout
- Rectangular aerator with 40 individual streams
- Spout hole diameter 1-1/2"
- Hole diameter single-lever mixer 2-1/4"
- Flange 3-1/8" x 3-1/8"
- Water flow rate limited to max. 1.2 gpm
- lead-free
- This product can help a building meet the requirements of Green Building Rating Systems, e.g. LEED®, BREEAM®, DGNB (ADA)

(ADA)

	Chrome	36 860 705-00
	Brushed Platinum	36 860 705-06
	Dark Chrome	36 860 705-19
	Brushed Champagne (22kt Gold)	36 860 705-46
	Champagne (22kt Gold)	36 860 705-47
	Brushed Dark Platinum	36 860 705-99

Required article

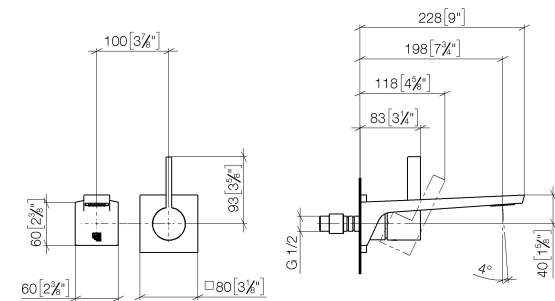


- Rough for wall-mounted faucet -**    35 860 970-90 0010
- Max. rough in depth "
  - Min. rough in depth "
  - Rough can be rotated to position the lever on top or to the left of the spout.

**CL.1 Wall-mounted single-lever mixer without drain - Chrome**

36 860 705 Product version from 7/1/2023

mm [inches]



**Flow rate chart**



**Codes & Standards**

ADA	ASME A112.18.1	ASME A112.18.1/CSA B125.1	California Energy Commission (CEC)
cUPC	DIN 4109	EN 817	EPA WaterSense
ISO 3822	NSF/ANSI 372	NSF/ANSI/CAN 61	NSF372
NSF61	Ü-Zeichen	Water Sense	WaterSense





CL.1 Wall-mounted single-lever mixer without drain - Chrome

---

36 860 705    Product version from 7/1/2023

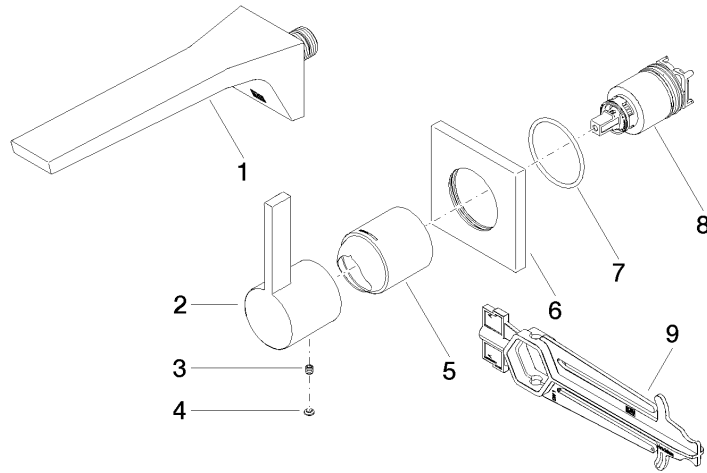
Certificates

---

IAPMO_N-4976	DVGW_DW-6512DN0	IAPMO_6397	LGA_29	IAPMO_8834
IAPMO_4976 (				

## CL.1 Wall-mounted single-lever mixer without drain - Chrome

36 860 705 Product version from 7/1/2023



### Spare parts list

Number	Item Number	Designation	Number of units	Lead time
1	13 800 705-00	CL.1 Lavatory spout, wall-mounted without drain - Chrome	1	2
2	09 20 70 050-00	handle	1	10
3	90 31 11 030 00 90	pin	1	2
4	90 31 20 087 00-00	plug	1	10
5	09 11 02 288-00	cover	1	10
6	09 27 78 039-00	rosette	1	10
7	90 14 10 049 00 90	seal	1	2
8	90 15 05 064 01 90	cartridge	1	2
9	90 30 09 064 00 90	key	1	2