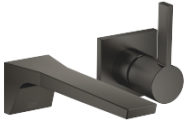


CL.1 Wall-mounted single-lever mixer without drain - Brushed Dark Platinum







CL.1

36 860 705 Product version from 7/1/2023



- 7-3/4" Projection
 - Rigid spout
 - Rectangular aerator with 40 individual streams
 - Spout hole diameter 1-1/2"
 - Hole diameter single-lever mixer 2-1/4"
 - Flange 3-1/8" x 3-1/8"
 - Water flow rate limited to max. 1.2 gpm
 - lead-free
 - This product can help a building meet the requirements of Green Building Rating Systems, e.g. LEED®, BREEAM®, DGNB
- (ADA)**

(ADA)

	Brushed Dark Platinum	36 860 705-99
	Chrome	36 860 705-00
	Brushed Platinum	36 860 705-06
	Dark Chrome	36 860 705-19
	Brushed Champagne (22kt Gold)	36 860 705-46
	Champagne (22kt Gold)	36 860 705-47

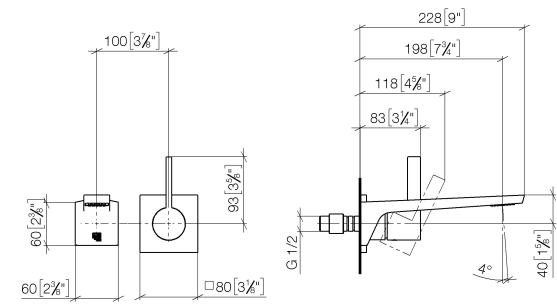
Required article



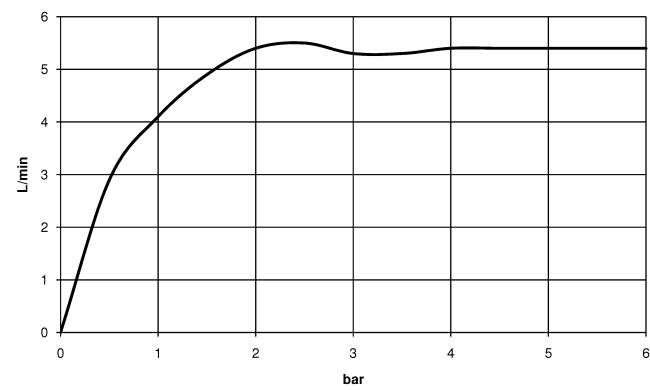
- Rough for wall-mounted faucet -** 35 860 970-90
0010
- Max. rough in depth 3-3/4"
 - Min. rough in depth 3-1/8"
 - Rough can be rotated to position the lever on top or to the left of the spout.

36 860 705 Product version from 7/1/2023

mm [inches]



Flow rate chart



Codes & Standards

ADA	ASME A112.18.1	California Energy Commission (CEC)	cUPC
DIN 4109	EN 817	EPA WaterSense	ISO 3822
NSF372	NSF61	Ü-Zeichen	WaterSense





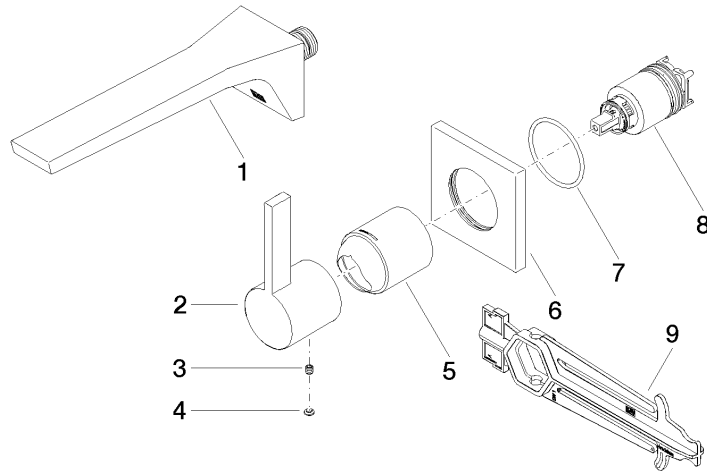
CL.1 Wall-mounted single-lever mixer without drain - Brushed Dark Platinum

CL.1

36 860 705 Product version from 7/1/2023

Certificates and sustainability

IAPMO_N-4976	DVGW_DW-6512DN0	IAPMO_6397	LGA_29	IAPMO_4976 (
IAPMO_8834				



Spare parts list

Number	Item Number	Designation	Number of units	Lead time
6	09 27 78 039-99	rosette	1.00	20
5	09 11 02 288-99	cover	1.00	20
1	13 800 705-99	CL.1 Lavatory spout, wall-mounted without drain - Brushed Dark Platinum	1.00	60
2	09 20 70 050-99	handle	1.00	20
8	90 15 05 064 01 90	cartridge	1.00	2
4	90 31 20 087 00-99	plug	1.00	20
9	90 30 09 064 00 90	key	1.00	2
3	90 31 11 030 00 90	pin	1.00	2
7	90 14 10 049 00 90	seal	1.00	2