

**VAIA Wall-mounted single-lever mixer without drain - Brushed Platinum**










36 860 809



- 7-1/2" Projection
- Rigid spout
- Round aerated stream
- Spout hole diameter 1-1/2"
- Hole diameter single-lever mixer 2-1/4"
- Mixer with flange Ø 3-1/8"
- 2-1/8" diameter flange for spout
- Water flow rate limited to max. 1.2 gpm
- lead-free
- This product can help a building meet the requirements of Green Building Rating Systems, e.g. LEED®, BREEAM®, DGNB

**(ADA)**

(ADA)

|   |                               |                    |
|---|-------------------------------|--------------------|
|  | Brushed Platinum              | 36 860 809-06 0010 |
|  | Chrome                        | 36 860 809-00 0010 |
|  | Platinum                      | 36 860 809-08 0010 |
|  | Dark Chrome                   | 36 860 809-19 0010 |
|  | Brushed Durabrass (23kt Gold) | 36 860 809-28 0010 |
|  | Brushed Bronze                | 36 860 809-42 0010 |
|  | Brushed Champagne (22kt Gold) | 36 860 809-46 0010 |
|  | Champagne (22kt Gold)         | 36 860 809-47 0010 |
|  | Brushed Dark Platinum         | 36 860 809-99 0010 |

**Required article**



**Rough for wall-mounted faucet -** 35 860 970-90  
0010

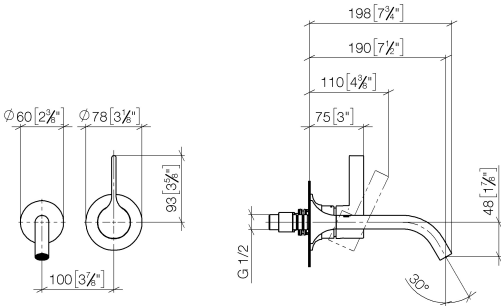
- Max. rough in depth "
- Min. rough in depth "
- Rough can be rotated to position the lever on top or to the left of the spout.



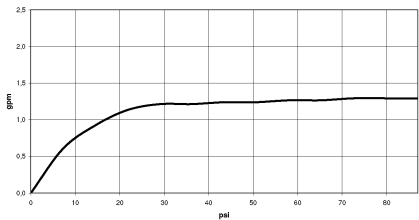
# VAIA Wall-mounted single-lever mixer without drain - Brushed Platinum

36 860 809

mm [inches]



## Flow rate chart



## Codes & Standards

|        |                |                           |                                    |
|--------|----------------|---------------------------|------------------------------------|
| ADA    | ASME A112.18.1 | ASME A112.18.1/CSA B125.1 | California Energy Commission (CEC) |
| cUPC   | EPA WaterSense | NSF/ANSI 372              | NSF/ANSI/CAN 61                    |
| NSF372 | NSF61          | Water Sense               | WaterSense                         |





VAIA Wall-mounted single-lever mixer without drain - Brushed Platinum

---

36 860 809

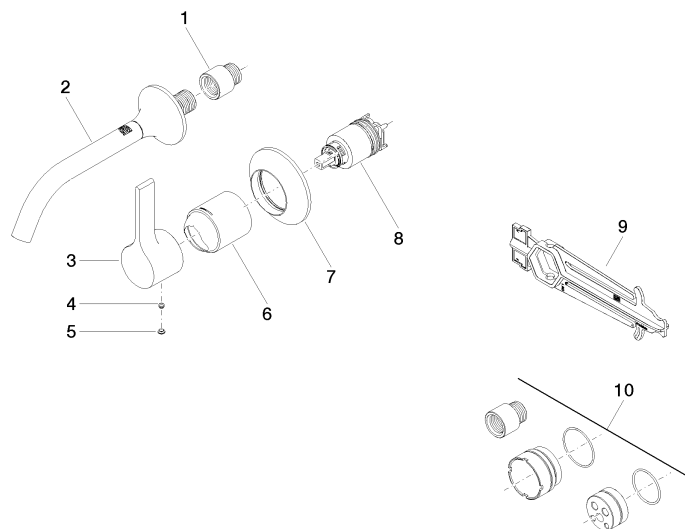
Certificates

---

IAPMO\_N-4976      IAPMO\_6397      IAPMO\_8834      IAPMO\_4976 (

## VAIA Wall-mounted single-lever mixer without drain - Brushed Platinum

36 860 809



### Spare parts list

| Number   | Item Number        | Designation  | Number of units | Lead time |
|--|--------------------|--|-----------------|-----------|
| 1  | 09 24 03 072 10 90 | nipple   | 1               | 2         |
| 2  | 13 800 809-06 0010 | VAIA Lavatory spout, wall-mounted without drain - Brushed Platinum | 1               | -         |
| Spare part can no longer be ordered, please order the replacement item |                    |  |                 |           |
| 3  | 09 20 80 021-06    | handle   | 1               | 10        |
| 4  | 90 31 11 063 00 90 | pin  | 1               | 2         |
| 5  | 90 31 20 087 00-06 | plug   | 1               | 10        |
| 6  | 09 11 02 288-06    | cover  | 1               | 10        |
| 7  | 90 27 80 012 00-06 | rosette  | 1               | 10        |
| 8  | 90 15 05 064 01 90 | cartridge  | 1               | 2         |
| 9  | 90 30 09 064 00 90 | key  | 1               | 2         |
| 10   | 12 869 970 90      | Extension 3/4\" -  | 1               | 2         |