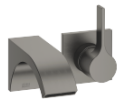


**CYO Wall-mounted single-lever mixer without drain - Brushed Dark Platinum**

CYO






36 860 811



- 6-1/4" Projection
- Rigid spout
- Rectangular aerated stream
- Spout hole diameter 1-1/2"
- Hole diameter single-lever mixer 2-1/4"
- Flange for mixer 3-1/8" x 3-1/8"
- Water flow rate limited to max. 1.2 gpm
- lead-free
- This product can help a building meet the requirements of Green Building Rating Systems, e.g. LEED®, BREEAM®, DGNB

**(ADA)**

(ADA)

	Brushed Dark Platinum	36 860 811-99
	Chrome	36 860 811-00
	Brushed Platinum	36 860 811-06
	Dark Chrome	36 860 811-19
	Brushed Durabronze (23kt Gold)	36 860 811-28

**Required article**

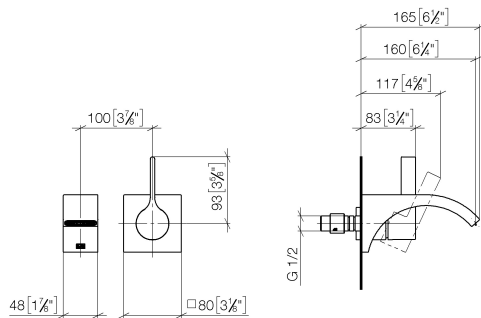


**Rough for wall-mounted faucet -** 35 860 970-90  
0010

- Max. rough in depth 3-3/4"
- Min. rough in depth 3-1/8"
- Rough can be rotated to position the lever on top or to the left of the spout.

36 860 811

mm [inches]



Flow rate chart



### Codes & Standards

ASME A112.18.1	California Energy Commission (CEC)	cUPC	DIN 4109
EPA WaterSense	ISO 3822	NSF372	NSF61
Scottish Water Byelaws	UK Water Supply Regulations	Ü-Zeichen	WaterSense





CYO Wall-mounted single-lever mixer without drain - Brushed Dark Platinum

CYO

36 860 811

Certificates and sustainability

IAPMO\_N-4976      WRAS\_2107      IAPMO\_6397      LGA\_38      IAPMO\_4976 (

IAPMO\_8834

36 860 811



## Spare parts list

Number	Item Number	Designation	Number of units	Lead time
5	90 31 20 087 00-99	plug	1.00	20
9	90 15 05 064 01 90	cartridge	1.00	2
7	09 27 78 039-99	rosette	1.00	20
3	09 20 80 021-99	handle	1.00	20
2	09 24 03 072 10 90	nipple	1.00	2
1	13 800 811-99	CYO Lavatory spout, wall-mounted without drain - Brushed Dark Platinum	1.00	20
6	09 11 02 288-99	cover	1.00	20
4	90 31 11 030 00 90	pin	1.00	2
8	90 14 10 049 00 90	seal	1.00	2
10	90 30 09 064 00 90	key	1.00	2