

## META Wall-mounted single-lever mixer without drain - Brushed Bronze

META

36 861 660 Product version from 7/1/2023



- 9-7/8" Projection
- Rigid spout
- Round aerated stream
- Spout hole diameter 1-1/2"
- Hole diameter single-lever mixer 2-1/4"
- 2-1/8" diameter flange for spout
- Diameter flange for mixer 3-1/8"
- Water flow rate limited to max. 1.2 gpm
- lead-free
- This product can help a building meet the requirements of Green Building Rating Systems, e.g. LEED®, BREEAM®, DGNB (ADA)

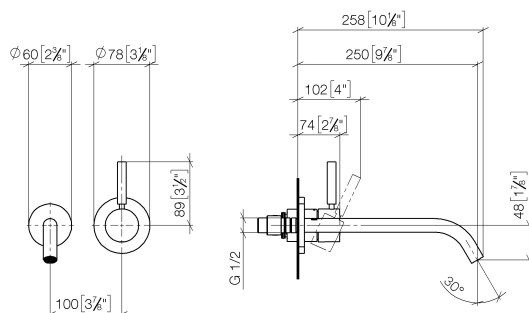
(ADA)

	Brushed Bronze	36 861 660-42 0010
	Chrome	36 861 660-00 0010
	Brushed Platinum	36 861 660-06 0010
	Dark Chrome	36 861 660-19 0010
	Light gold	36 861 660-26 0010
	Brushed Light Gold	36 861 660-27 0010
	Matte Black	36 861 660-33 0010
	Brushed Dark Brass	36 861 660-39 0010
	Brushed Champagne (22kt Gold)	36 861 660-46 0010
	Champagne (22kt Gold)	36 861 660-47 0010
	Brushed Chrome	36 861 660-93 0010
	Brushed Dark Platinum	36 861 660-99 0010

### Required article



- Rough for wall-mounted faucet -** 35 860 970-90 0010
- Min. rough in depth 3-1/8"
  - Rough can be rotated to position the lever on top or to the left of the spout.
  - Max. rough in depth 3-3/4"



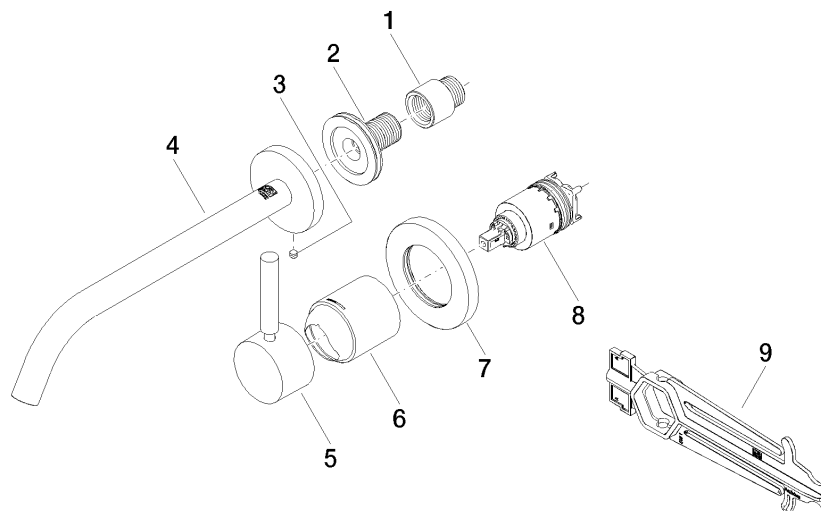
## Codes & Standards

ADA	ASME A112.18.1	California Energy Commission (CEC)	cUPC
EPA WaterSense	NSF372	NSF61	WaterSense



## Certificates and sustainability

IAPMO\_N-4976 IAPMO\_6397 IAPMO\_4976 ( IAPMO\_8834



## Spare parts list

Number	Item Number	Designation	Number of units	Lead time
9	90 30 09 064 00 90	key	1.00	2
6	09 11 02 288-42	cover	1.00	60
2	90 24 03 280 00 90	nipple	1.00	2
7	90 27 62 011 00-42	rosette	1.00	30
5	90 20 66 007 00-42	handle	1.00	30
3	09 31 11 112 90	pin	1.00	60
4	90 28 22 324 01-42	spout	1.00	30
8	90 15 05 064 01 90	cartridge	1.00	2
1	09 24 03 072 10 90	nipple	1.00	2