

CYO Wall-mounted single-lever mixer without drain - Chrome






36 861 811



- 7-1/2" Projection
- Rigid spout
- Rectangular aerated stream
- Spout hole diameter 1-1/2"
- Hole diameter single-lever mixer 2-1/4"
- Flange for mixer 3-1/8" x 3-1/8"
- Water flow rate limited to max. 1.2 gpm
- lead-free
- This product can help a building meet the requirements of Green Building Rating Systems, e.g. LEED®, BREEAM®, DGNB

(ADA)

(ADA)

| | | |
|---|-----------------------------------|---------------|
|  | Chrome | 36 861 811-00 |
|  | Brushed Platinum | 36 861 811-06 |
|  | Dark Chrome | 36 861 811-19 |
|  | Brushed Durabronze (23kt Gold) | 36 861 811-28 |
|  | Brushed Dark Platinum | 36 861 811-99 |

Required article

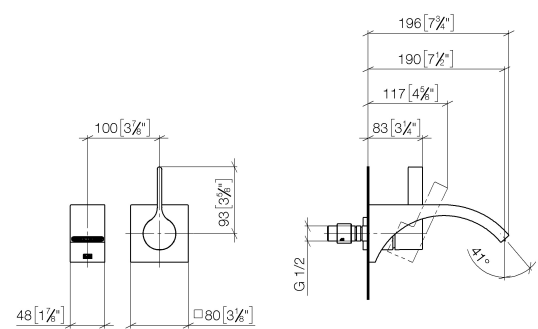


- Rough for wall-mounted faucet -** 35 860 970-90
- Max. rough in depth "
 - Min. rough in depth "
 - Rough can be rotated to position the lever on top or to the left of the spout.

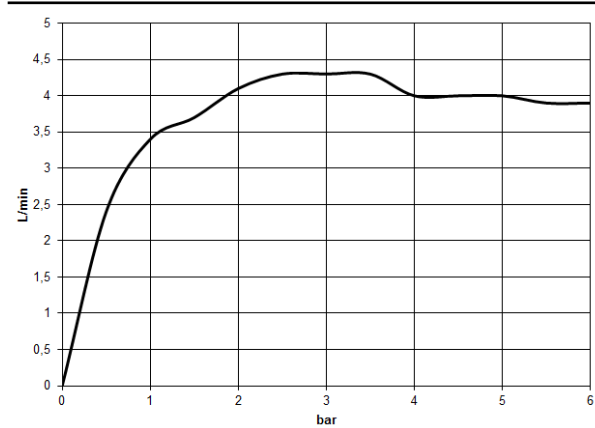
CYO Wall-mounted single-lever mixer without drain - Chrome

36 861 811


mm [inches]



Flow rate chart



Codes & Standards

| | | | |
|------------------------|---|-----------|-------------|
| ASME A112.18.1 | California Energy Commission (CEC) | cUPC | DIN 4109 |
| EPA WaterSense | ISO 3822 | NSF372 | NSF61 |
| Scottish Water Byelaws | UK Water Supply Regulations | Ü-Zeichen | Water Sense |
| WaterSense |  | | |



CYO Wall-mounted single-lever mixer without drain - Chrome

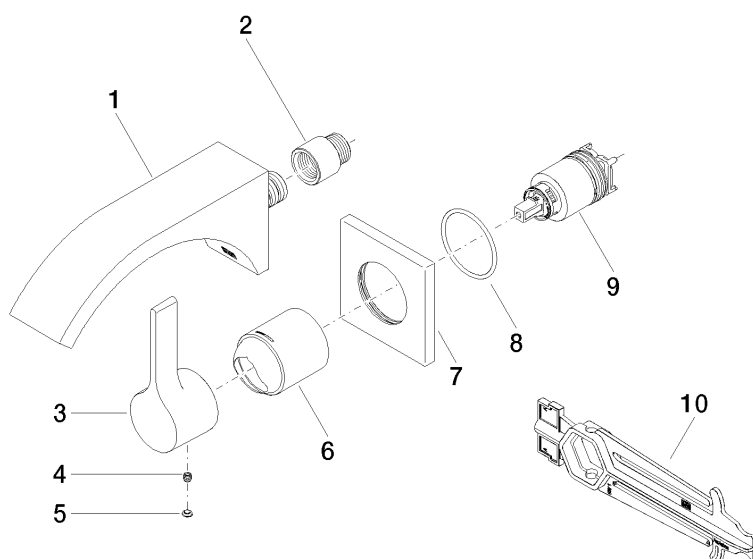
36 861 811

Certificates

| | | | | |
|--------------|-----------|------------|--------|------------|
| IAPMO_N-4976 | WRAS_2107 | IAPMO_6397 | LGA_38 | IAPMO_8834 |
| IAPMO_4976 (| | | | |

CYO Wall-mounted single-lever mixer without drain - Chrome

36 861 811



Spare parts list

| Number | Item Number | Designation | Number of units | Lead time |
|--------|--------------------|---|-----------------|-----------|
| 1 | 13 805 811-00 | CYO Lavatory spout, wall-mounted without drain - Chrome | 1 | 10 |
| 2 | 09 24 03 072 10 90 | nipple | 1 | 2 |
| 3 | 09 20 80 021-00 | handle | 1 | 10 |
| 4 | 90 31 11 030 00 90 | pin | 1 | 2 |
| 5 | 90 31 20 087 00-00 | plug | 1 | 10 |
| 6 | 09 11 02 288-00 | cover | 1 | 10 |
| 7 | 09 27 78 039-00 | rosette | 1 | 10 |
| 8 | 90 14 10 049 00 90 | seal | 1 | 2 |
| 9 | 90 15 05 064 01 90 | cartridge | 1 | 2 |
| 10 | 90 30 09 064 00 90 | key | 1 | 2 |