



CYO Wall-mounted single-lever mixer without drain - Brushed Durabrass (23kt Gold)





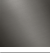
CYO

36 861 811



- 7-1/2" Projection
  - Rigid spout
  - Rectangular aerated stream
  - Spout hole diameter 1-1/2"
  - Hole diameter single-lever mixer 2-1/4"
  - Flange for mixer 3-1/8" x 3-1/8"
  - Water flow rate limited to max. 1.2 gpm
  - lead-free
  - This product can help a building meet the requirements of Green Building Rating Systems, e.g. LEED®, BREEAM®, DGNB
- (ADA)**

(ADA)

	Brushed Durabrass (23kt Gold)	36 861 811-28
	Chrome	36 861 811-00
	Brushed Platinum	36 861 811-06
	Dark Chrome	36 861 811-19
	Brushed Dark Platinum	36 861 811-99

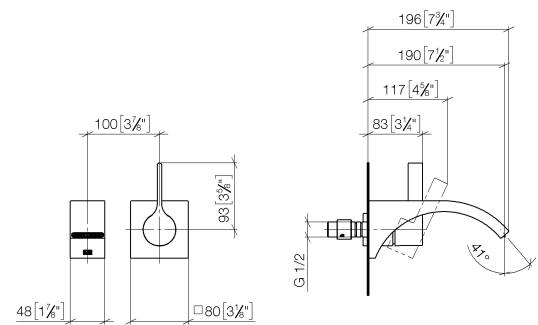
Required article



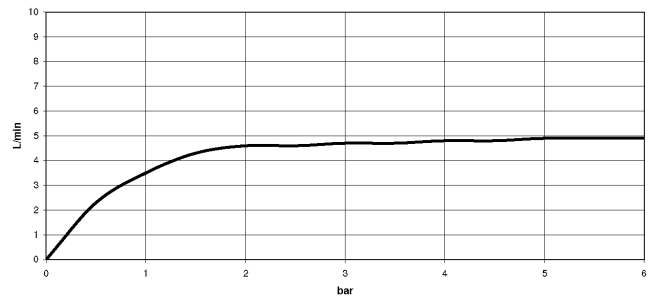
- Rough for wall-mounted faucet -** 35 860 970-90
- Max. rough in depth 3-3/4" 0010
  - Min. rough in depth 3-1/8"
  - Rough can be rotated to position the lever on top or to the left of the spout.

36 861 811

mm [inches]



Flow rate chart



Codes & Standards

California Energy Commission (CEC)	DIN 4109	ISO 3822	NSF372
NSF61	Scottish Water Byelaws	UK Water Supply Regulations	Ü-Zeichen



CYO Wall-mounted single-lever mixer without drain - Brushed Durabrass (23kt Gold)

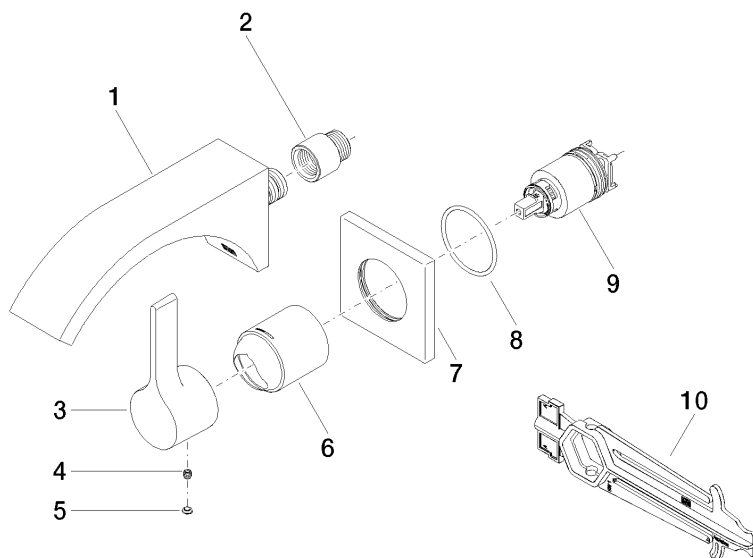
CYO

36 861 811

Certificates and sustainability

IAPMO_N-4976	WRAS_2107	IAPMO_6397	LGA_38
--------------	-----------	------------	--------

36 861 811



## Spare parts list

Number	Item Number	Designation	Number of units	Lead time
9	90 15 05 064 01 90	cartridge	1.00	2
6	09 11 02 288-28	cover	1.00	20
1	13 805 811-28	CYO Lavatory spout, wall-mounted without drain - Brushed Durabronz (23kt Gold)	1.00	20
5	90 31 20 087 00-28	plug	1.00	20
2	09 24 03 072 10 90	nipple	1.00	2
3	09 20 80 021-28	handle	1.00	20
7	09 27 78 039-28	rosette	1.00	20
8	90 14 10 049 00 90	seal	1.00	2
10	90 30 09 064 00 90	key	1.00	2
4	90 31 11 030 00 90	pin	1.00	2