





DORNBRACHT YARRE Wall-mounted single-lever mixer without drain - Soft Black

36 861 832 Product version from 1/1/2023



- 7-7/8" Projection
- Rigid spout
- Round aerated stream
- Spout hole diameter 1-1/2"
- Hole diameter single-lever mixer 2-1/4"
- 2-1/8" diameter flange for spout
- Flange for mixer 3-1/8" x 3-1/8"
- Water flow rate limited to max. 1.2 gpm
- Diameter flange for mixer 3-1/8"

	Soft Black	36 861 832-69 0010
	Chrome	36 861 832-00 0010

Required article

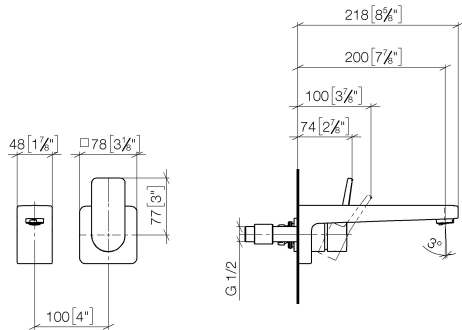
Rough for wall-mounted faucet - 35 870 970-90 0010






DORNBRAUCH YARRE Wall-mounted single-lever mixer without drain - Soft Black

36 861 832 Product version from 1/1/2023
mm [inches]



Codes & Standards

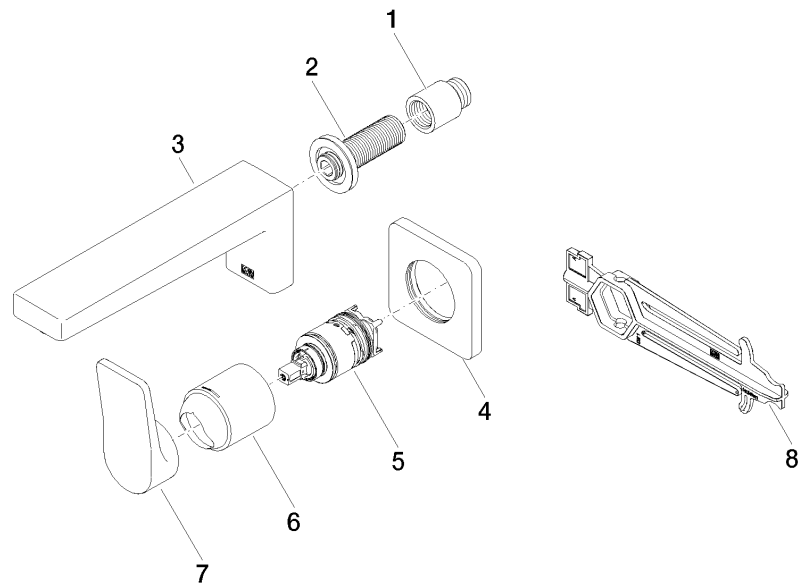
ADA	ASME A112.18.1	ASME A112.18.1/CSA B125.1	California Energy Commission (CEC)
cUPC	EPA WaterSense	NSF/ANSI 372	NSF/ANSI/CAN 61
NSF372	NSF61	WaterSense	

Certificates

IAPMO_N-4976	IAPMO_6397	IAPMO_4976 (IAPMO_8834
--------------	------------	--------------	------------

DORNBRAUCHT YARRE Wall-mounted single-lever mixer without drain - Soft Black

36 861 832
Product version from 1/1/2023



Spare parts list

Number	Item Number	Designation	Number of units	Lead time
1	09 24 03 080 90	extension	1	2
2	90 24 03 316 00 90	nipple	1	2
3	90 11 06 227 00-69	spout	1	2
4	90 27 83 027 00-69	rosette	1	2
5	90 15 05 071 00 90	cartridge	1	2
6	90 11 02 393 00-69	cover	1	2
7	90 20 83 072 00-69	handle	1	2
8	90 30 09 064 00 90	key	1	2