

LISSÉ Wall-mounted single-lever mixer without drain - Brushed Platinum








36 861 845 Product version from 4/1/2024



- 8-1/4" Projection
- Rigid spout
- Round aerated stream
- Spout hole diameter 1-1/2"
- Hole diameter single-lever mixer 2-1/4"
- Flange 3-1/8" x 3-1/8"
- Water flow rate limited to max. 1.5 gpm
- lead-free
- This product can help a building meet the requirements of Green Building Rating Systems, e.g. LEED®, BREEAM®, DGNB

(ADA)

(ADA)

	Brushed Platinum	36 861 845-06
	Chrome	36 861 845-00
	Dark Chrome	36 861 845-19
	Brushed Light Gold	36 861 845-27
	Matte Black	36 861 845-33
	Brushed Chrome	36 861 845-93
	Brushed Dark Platinum	36 861 845-99

Required article



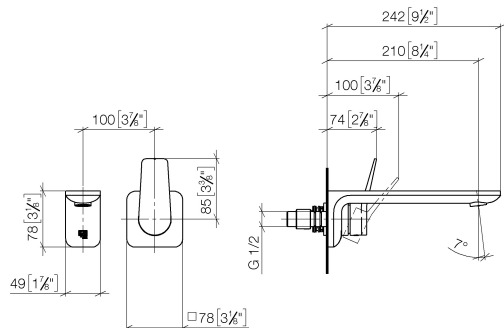
- Rough for wall-mounted faucet -**

35 860 970-90
0010
- Max. rough in depth "
 - Min. rough in depth "
 - Rough can be rotated to position the lever on top or to the left of the spout.

LISSE Wall-mounted single-lever mixer without drain - Brushed Platinum

36 861 845 Product version from 4/1/2024

mm [inches]



Flow rate chart



Codes & Standards

ADA	ASME A112.18.1	ASME A112.18.1/CSA B125.1	cUPC
DIN 4109	EN 817	EPA WaterSense	ISO 3822
NSF/ANSI 372	NSF/ANSI/CAN 61	NSF372	NSF61
Scottish Water Byelaws	UK Water Supply Regulations	Ü-Zeichen	Water Sense

WaterSense





LISSE Wall-mounted single-lever mixer without drain - Brushed Platinum

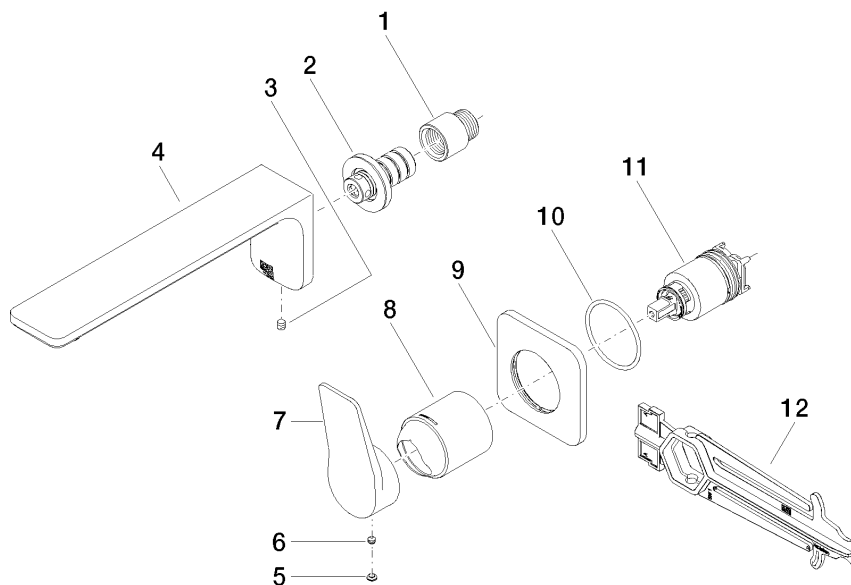
36 861 845 Product version from 4/1/2024

Certificates

IAPMO_N-4976	DVGW_DW-6512DN0	IAPMO_6397	LGA_29	WRAS_2107
IAPMO_8834	IAPMO_4976 (

LISSÉ Wall-mounted single-lever mixer without drain - Brushed Platinum

36 861 845 Product version from 4/1/2024



Spare parts list

Number	Item Number	Designation	Number of units	Lead time
1	09 24 03 072 10 90	nipple	1	2
2	90 24 03 108 00 90	nipple set	1	2
3	90 31 11 004 00 90	pin	1	2
4	90 11 84 023 00-06	spout	1	10
5	90 31 20 087 00-06	plug	1	10
6	90 31 11 063 00 90	pin	1	2
7	09 20 84 021-06	handle	1	10
8	09 11 02 288-06	cover	1	10
9	90 27 84 020 00-06	rosette	1	10
10	90 14 10 049 00 90	seal	1	2
11	90 15 05 046 02 90	cartridge	1	2
12	90 30 09 064 00 90	key	1	2