





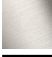




LISSÉ Wall-mounted single-lever mixer without drain - Dark Chrome

36 861 845 Product version from 4/1/2024



- 8-1/4" Projection
- Rigid spout
- Round aerated stream
- Spout hole diameter 1-1/2"
- Hole diameter single-lever mixer 2-1/4"
- Flange 3-1/8" x 3-1/8"
- Water flow rate limited to max. 1.5 gpm
- lead-free
- This product can help a building meet the requirements of Green Building Rating Systems, e.g. LEED®, BREEAM®, DGNB

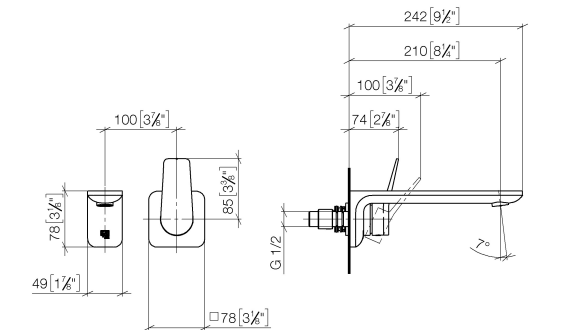
(ADA)

| | | |
|---|-----------------------|---------------|
|  | Dark Chrome | 36 861 845-19 |
|  | Chrome | 36 861 845-00 |
|  | Brushed Platinum | 36 861 845-06 |
|  | Brushed Light Gold | 36 861 845-27 |
|  | Matte Black | 36 861 845-33 |
|  | Brushed Chrome | 36 861 845-93 |
|  | Brushed Dark Platinum | 36 861 845-99 |

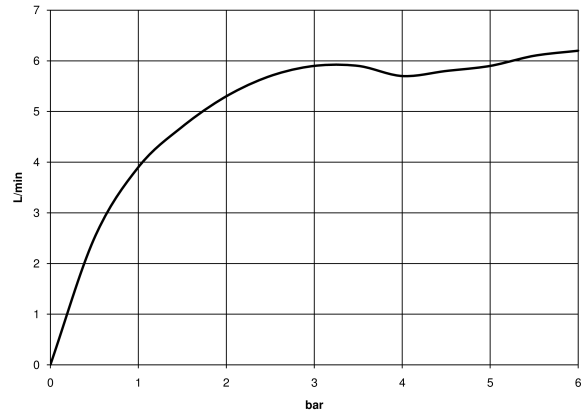
LISSÉ Wall-mounted single-lever mixer without drain - Dark Chrome

36 861 845 Product version from 4/1/2024

mm [inches]



Flow rate chart



Codes & Standards

| | | | |
|--------|------------------------|-----------------------------|--------|
| ADA | ASME A112.18.1 | ASME A112.18.1/CSA B125.1 | cUPC |
| EN 817 | NSF/ANSI 372 | NSF/ANSI/CAN 61 | NSF372 |
| NSF61 | Scottish Water Byelaws | UK Water Supply Regulations | |



LISSE Wall-mounted single-lever mixer without drain - Dark Chrome

36 861 845 Product version from 4/1/2024

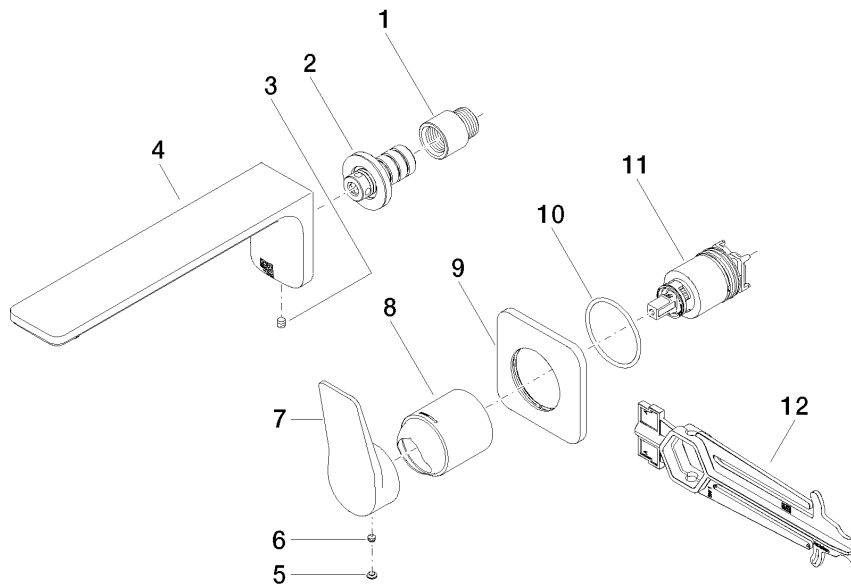
Certificates

| | | | | |
|--------------|-----------------|------------|-----------|--------------|
| IAPMO_N-4976 | DVGW_DW-6512DN0 | IAPMO_6397 | WRAS_2107 | IAPMO_4976 (|
|--------------|-----------------|------------|-----------|--------------|

LISSÉ Wall-mounted single-lever mixer without drain - Dark Chrome

36 861 845 Product version from 4/1/2024

Parts for other
finishes can be found
here: [Chrome](#)



Spare parts list

| Number | Item Number | Designation | Number of units | Lead time |
|--------|--------------------|-------------|-----------------|-----------|
| 1 | 09 24 03 072 10 90 | nipple | 1 | 2 |
| 2 | 90 24 03 108 00 90 | nipple set | 1 | 2 |
| 3 | 90 31 11 004 00 90 | pin | 1 | 2 |
| 4 | 90 11 84 023 00-19 | spout | 1 | 20 |
| 5 | 90 31 20 087 00-19 | plug | 1 | 20 |
| 6 | 90 31 11 063 00 90 | pin | 1 | 2 |
| 7 | 09 20 84 021-19 | handle | 1 | 60 |
| 8 | 09 11 02 288-19 | cover | 1 | 20 |
| 9 | 90 27 84 020 00-19 | rosette | 1 | 20 |
| 10 | 90 14 10 049 00 90 | seal | 1 | 2 |
| 11 | 90 15 05 046 02 90 | cartridge | 1 | 2 |
| 12 | 90 30 09 064 00 90 | key | 1 | 2 |