



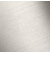

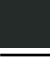

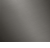
LISSÉ Wall-mounted single-lever mixer without drain - Brushed Light Gold

36 861 845    Product version from 4/1/2024



- 8-1/4" Projection
  - Rigid spout
  - Round aerated stream
  - Spout hole diameter 1-1/2"
  - Hole diameter single-lever mixer 2-1/4"
  - Flange 3-1/8" x 3-1/8"
  - Water flow rate limited to max. 1.5 gpm
  - lead-free
  - This product can help a building meet the requirements of Green Building Rating Systems, e.g. LEED®, BREEAM®, DGNB
- (ADA)**

(ADA)

	Brushed Light Gold	36 861 845-27
	Chrome	36 861 845-00
	Brushed Platinum	36 861 845-06
	Dark Chrome	36 861 845-19
	Matte Black	36 861 845-33
	Brushed Chrome	36 861 845-93
	Brushed Dark Platinum	36 861 845-99

Required article

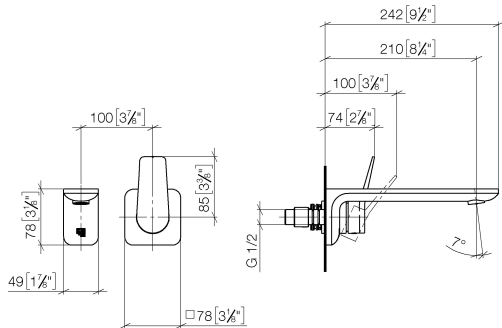


- Rough for wall-mounted faucet -**    35 860 970-90
- Min. rough in depth "
  - Rough can be rotated to position the lever on top or to the left of the spout.
  - Max. rough in depth "

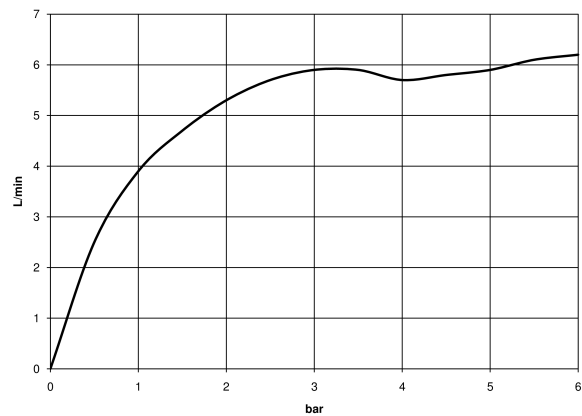
LISSÉ Wall-mounted single-lever mixer without drain - Brushed Light Gold

36 861 845 Product version from 4/1/2024

mm [inches]



Flow rate chart



Codes & Standards

ADA	ASME A112.18.1/CSA B125.1	EN 817	NSF/ANSI 372
NSF/ANSI/CAN 61	NSF372	NSF61	Scottish Water Byelaws
UK Water Supply Regulations			



LISSE Wall-mounted single-lever mixer without drain - Brushed Light Gold

---

36 861 845 Product version from 4/1/2024

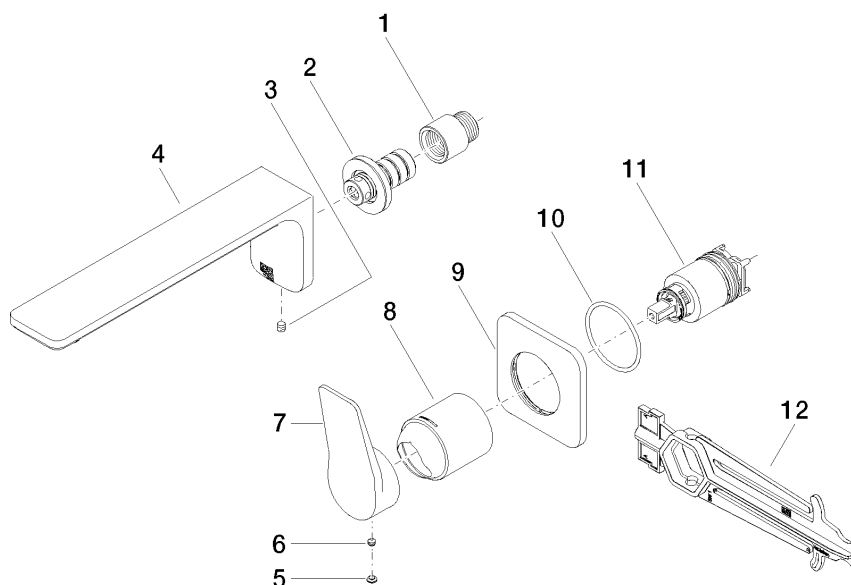
Certificates

---

IAPMO_N-4976	DVGW_DW-6512DN0	IAPMO_6397	WRAS_2107
--------------	-----------------	------------	-----------

## LISSE Wall-mounted single-lever mixer without drain - Brushed Light Gold

36 861 845 Product version from 4/1/2024



### Spare parts list

Number	Item Number	Designation	Number of units	Lead time
1	09 24 03 072 10 90	nipple	1	2
2	90 24 03 108 00 90	nipple set	1	2
3	90 31 11 004 00 90	pin	1	2
4	90 11 84 023 00-27	spout	1	30
5	90 31 20 087 00-27	plug	1	30
6	90 31 11 063 00 90	pin	1	2
7	09 20 84 021-27	handle	1	60
8	09 11 02 288-27	cover	1	60
9	90 27 84 020 00-27	rosette	1	30
10	90 14 10 049 00 90	seal	1	2
11	90 15 05 046 02 90	cartridge	1	2
12	90 30 09 064 00 90	key	1	2