

LISSÉ Wall-mounted single-lever mixer without drain - Matte Black








36 861 845 Product version from 4/1/2024



- 8-1/4" Projection
- Rigid spout
- Round aerated stream
- Spout hole diameter 1-1/2"
- Hole diameter single-lever mixer 2-1/4"
- Flange 3-1/8" x 3-1/8"
- Water flow rate limited to max. 1.5 gpm
- lead-free
- This product can help a building meet the requirements of Green Building Rating Systems, e.g. LEED®, BREEAM®, DGNB

(ADA)

(ADA)

| | | |
|---|-----------------------|---------------|
|  | Matte Black | 36 861 845-33 |
|  | Chrome | 36 861 845-00 |
|  | Brushed Platinum | 36 861 845-06 |
|  | Dark Chrome | 36 861 845-19 |
|  | Brushed Light Gold | 36 861 845-27 |
|  | Brushed Chrome | 36 861 845-93 |
|  | Brushed Dark Platinum | 36 861 845-99 |

Required article



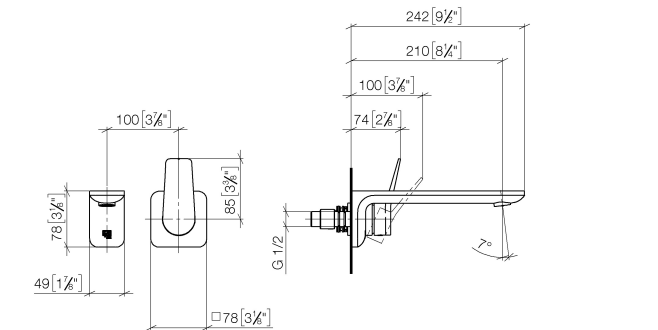
- Rough for wall-mounted faucet -**

35 860 970-90
0010
- Min. rough in depth "
 - Rough can be rotated to position the lever on top or to the left of the spout.
 - Max. rough in depth "

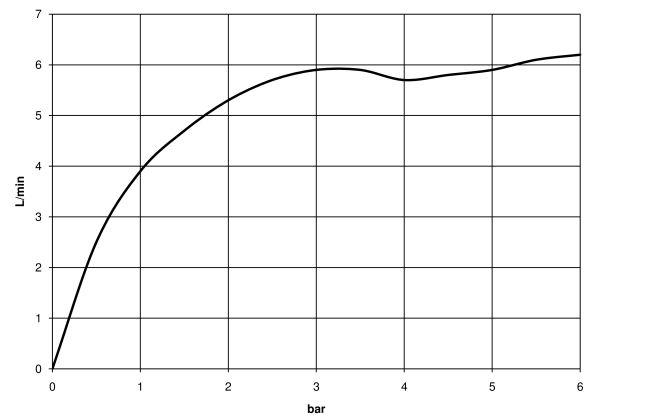
LISSÉ Wall-mounted single-lever mixer without drain - Matte Black

36 861 845 Product version from 4/1/2024

mm [inches]



Flow rate chart



Codes & Standards

| | | | |
|---------------------------|---------------------------------|-------------|----------------|
| ADA | ASME A112.18.1/CSA B125.1 | EN 817 | EPA WaterSense |
| NSF/ANSI 372 | NSF/ANSI/CAN 61 | NSF372 | NSF61 |
| Scottish Water Byelaws | UK Water Supply Regulations | Water Sense | WaterSense |





LISSE Wall-mounted single-lever mixer without drain - Matte Black

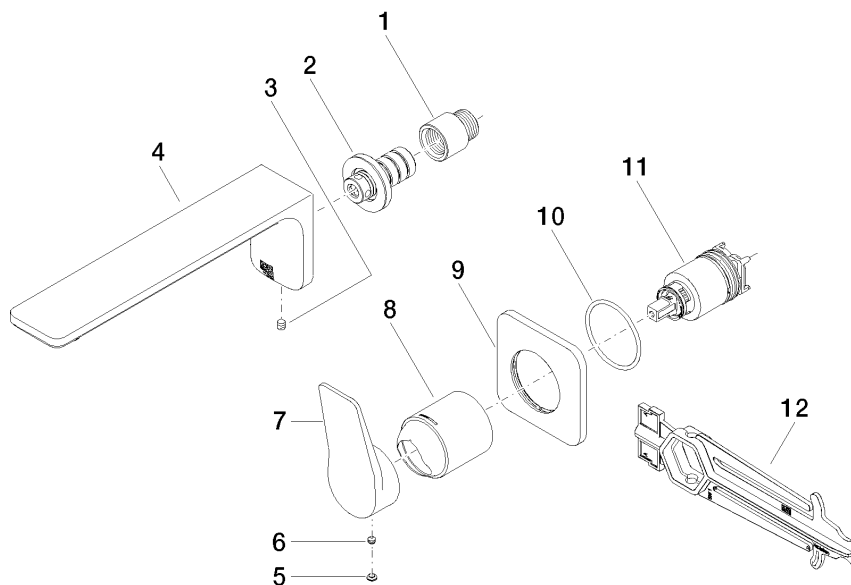
36 861 845 Product version from 4/1/2024

Certificates

| | | | | |
|--------------|-----------------|------------|-----------|------------|
| IAPMO_N-4976 | DVGW_DW-6512DN0 | IAPMO_6397 | WRAS_2107 | IAPMO_8834 |
|--------------|-----------------|------------|-----------|------------|

LISSÉ Wall-mounted single-lever mixer without drain - Matte Black

36 861 845 Product version from 4/1/2024



Spare parts list

| Number | Item Number | Designation | Number of units | Lead time |
|--------|--------------------|-------------|-----------------|-----------|
| 1 | 09 24 03 072 10 90 | nipple | 1 | 2 |
| 2 | 90 24 03 108 00 90 | nipple set | 1 | 2 |
| 3 | 90 31 11 004 00 90 | pin | 1 | 2 |
| 4 | 90 11 84 023 00-33 | spout | 1 | 30 |
| 5 | 90 31 20 087 00-33 | plug | 1 | 30 |
| 6 | 90 31 11 063 00 90 | pin | 1 | 2 |
| 7 | 09 20 84 021-33 | handle | 1 | 30 |
| 8 | 09 11 02 288-33 | cover | 1 | 30 |
| 9 | 90 27 84 020 00-33 | rosette | 1 | 30 |
| 10 | 90 14 10 049 00 90 | seal | 1 | 2 |
| 11 | 90 15 05 046 02 90 | cartridge | 1 | 2 |
| 12 | 90 30 09 064 00 90 | key | 1 | 2 |