



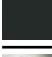



36 861 845 Product version from 4/1/2024



- 8-1/4" Projection
- Rigid spout
- Round aerated stream
- Spout hole diameter 1-1/2"
- Hole diameter single-lever mixer 2-1/4"
- Flange 3-1/8" x 3-1/8"
- Water flow rate limited to max. 1.5 gpm
- lead-free
- This product can help a building meet the requirements of Green Building Rating Systems, e.g. LEED®, BREEAM®, DGNB **(ADA)**

(ADA)

	Brushed Dark Platinum	36 861 845-99
	Chrome	36 861 845-00
	Brushed Platinum	36 861 845-06
	Dark Chrome	36 861 845-19
	Brushed Light Gold	36 861 845-27
	Matte Black	36 861 845-33
	Brushed Chrome	36 861 845-93

**Required article**



- Rough for wall-mounted faucet -** 35 860 970-90
- Min. rough in depth 3-1/8" 0010
  - Rough can be rotated to position the lever on top or to the left of the spout.
  - Max. rough in depth 3-3/4"

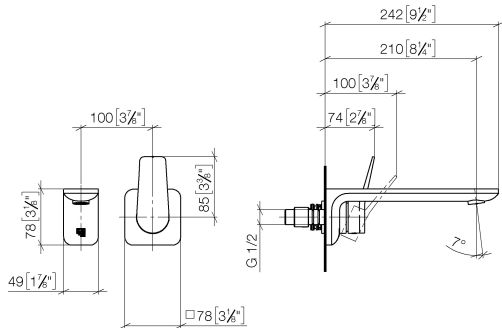


LISSE Wall-mounted single-lever mixer without drain - Brushed Dark Platinum

LISSE

36 861 845 Product version from 4/1/2024


mm [inches]



Flow rate chart



Codes & Standards

ADA	ASME A112.18.1	cUPC	EN 817
EPA WaterSense	NSF372	NSF61	Scottish Water Byelaws
UK Water Supply Regulations	WaterSense		



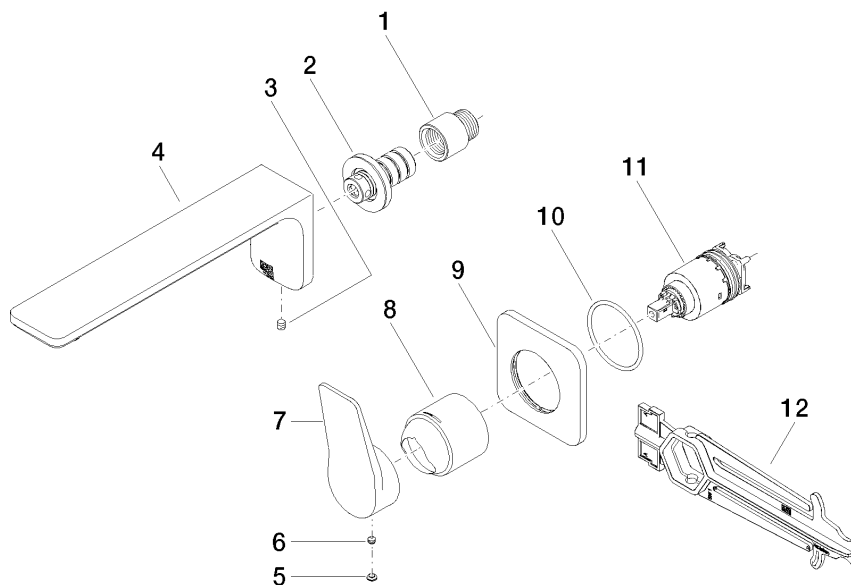
LISSE Wall-mounted single-lever mixer without drain - Brushed Dark Platinum

LISSE

36 861 845 Product version from 4/1/2024

Certificates and sustainability

IAPMO_N-4976	DVGW_DW-6512DN0	IAPMO_6397	WRAS_2107	IAPMO_4976 (
IAPMO_8834				



## Spare parts list

Number	Item Number	Designation	Number of units	Lead time
9	90 27 84 020 00-99	rosette	1.00	20
7	09 20 84 021-99	handle	1.00	20
11	90 15 05 064 01 90	cartridge	1.00	2
6	90 31 11 063 00 90	pin	1.00	2
2	90 24 03 108 00 90	nipple set	1.00	2
10	90 14 10 049 00 90	seal	1.00	2
3	90 31 11 004 00 90	pin	1.00	2
1	09 24 03 072 10 90	nipple	1.00	2
5	90 31 20 087 00-99	plug	1.00	20
4	90 11 84 023 00-99	spout	1.00	20
8	09 11 02 288-99	cover	1.00	20
12	90 30 09 064 00 90	key	1.00	2