

META Wall-mounted single-lever mixer with individual flanges - Brushed Bronze

META

36 862 660 Product version from 7/1/2023



- Spout version bent by 90°
- 7-1/2" Projection
- Rigid spout
- Round aerated stream
- Spout hole diameter 1-1/2"
- Hole diameter single-lever mixer 2-1/4"
- 2-1/8" diameter flange for spout
- Diameter flange for mixer 3-1/8"
- Water flow rate limited to max. 1.2 gpm
- lead-free
- This product can help a building meet the requirements of Green Building Rating Systems, e.g. LEED®, BREEAM®, DGNB

(ADA)

(ADA)

| | | |
|---|-------------------------------|--------------------|
|  | Brushed Bronze | 36 862 660-42 0010 |
|  | Chrome | 36 862 660-00 0010 |
|  | Brushed Platinum | 36 862 660-06 0010 |
|  | Dark Chrome | 36 862 660-19 0010 |
|  | Light gold | 36 862 660-26 0010 |
|  | Brushed Light Gold | 36 862 660-27 0010 |
|  | Matte Black | 36 862 660-33 0010 |
|  | Brushed Champagne (22kt Gold) | 36 862 660-46 0010 |
|  | Champagne (22kt Gold) | 36 862 660-47 0010 |
|  | Brushed Chrome | 36 862 660-93 0010 |
|  | Brushed Dark Platinum | 36 862 660-99 0010 |

Required article

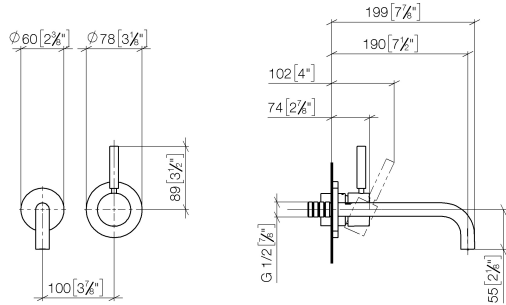


- Rough for wall-mounted faucet -** 35 860 970-90 0010
- Min. rough in depth 3-1/8"
 - Rough can be rotated to position the lever on top or to the left of the spout.
 - Max. rough in depth 3-3/4"

META Wall-mounted single-lever mixer with individual flanges - Brushed Bronze

META

36 862 660 Product version from 7/1/2023
mm [inches]



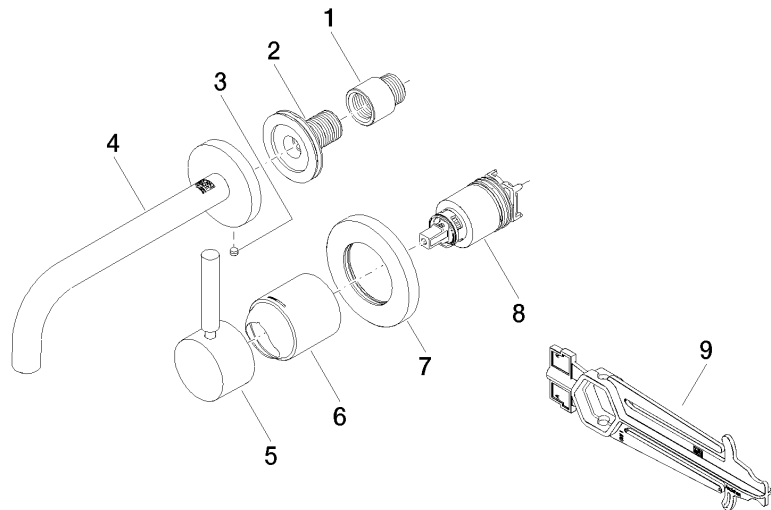
Codes & Standards

| | | | |
|----------------|----------------|------------------------------------|------------|
| ADA | ASME A112.18.1 | California Energy Commission (CEC) | cUPC |
| EPA WaterSense | NSF372 | NSF61 | WaterSense |



Certificates and sustainability

| | | | |
|--------------|------------|--------------|------------|
| IAPMO_N-4976 | IAPMO_6397 | IAPMO_4976 (| IAPMO_8834 |
|--------------|------------|--------------|------------|



Spare parts list

| Number | Item Number | Designation | Number of units | Lead time |
|--------|--------------------|-------------|-----------------|-----------|
| 1 | 09 24 03 072 10 90 | nipple | 1.00 | 2 |
| 5 | 90 20 66 007 00-42 | handle | 1.00 | 30 |
| 3 | 09 31 11 112 90 | pin | 1.00 | 60 |
| 4 | 90 28 22 351 01-42 | spout | 1.00 | 30 |
| 7 | 90 27 62 011 00-42 | rosette | 1.00 | 30 |
| 8 | 90 15 05 064 01 90 | cartridge | 1.00 | 2 |
| 9 | 90 30 09 064 00 90 | key | 1.00 | 2 |
| 6 | 09 11 02 288-42 | cover | 1.00 | 60 |
| 2 | 90 24 03 280 00 90 | nipple | 1.00 | 2 |