



META Wall-mounted single-lever mixer with individual flanges - Brushed Chrome

META

36 862 660 Product version from 7/1/2023



- Spout version bent by 90°
 - 7-1/2" Projection
 - Rigid spout
 - Round aerated stream
 - Spout hole diameter 1-1/2"
 - Hole diameter single-lever mixer 2-1/4"
 - 2-1/8" diameter flange for spout
 - Diameter flange for mixer 3-1/8"
 - Water flow rate limited to max. 1.2 gpm
 - lead-free
 - This product can help a building meet the requirements of Green Building Rating Systems, e.g. LEED®, BREEAM®, DGNB
- (ADA)

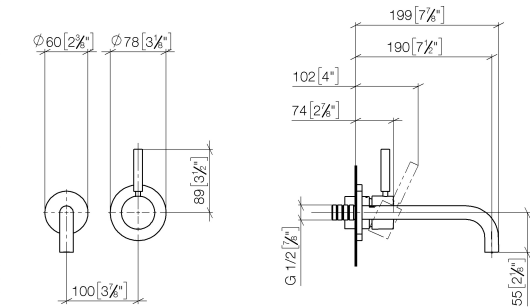
	Brushed Chrome	36 862 660-93 0010
	Chrome	36 862 660-00 0010
	Brushed Platinum	36 862 660-06 0010
	Dark Chrome	36 862 660-19 0010
	Light gold	36 862 660-26 0010
	Brushed Light Gold	36 862 660-27 0010
	Matte Black	36 862 660-33 0010
	Brushed Bronze	36 862 660-42 0010
	Brushed Champagne (22kt Gold)	36 862 660-46 0010
	Champagne (22kt Gold)	36 862 660-47 0010
	Brushed Dark Platinum	36 862 660-99 0010



META Wall-mounted single-lever mixer with individual flanges - Brushed Chrome

META

36 862 660 Product version from 7/1/2023
mm [inches]



Codes & Standards

ADA	ASME A112.18.1	California Energy Commission (CEC)	cUPC
EPA WaterSense	NSF372	NSF61	WaterSense



Certificates and sustainability

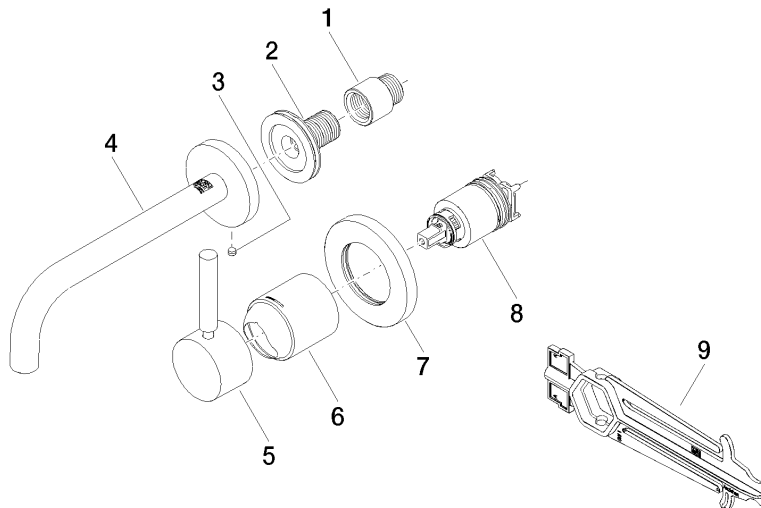
IAPMO_N-4976	IAPMO_6397	IAPMO_4976 (IAPMO_8834
--------------	------------	--------------	------------

META Wall-mounted single-lever mixer with individual flanges - Brushed Chrome

META

36 862 660 Product version from 7/1/2023

Parts for other
finishes can be found
here: [Chrome](#)



Spare parts list

Number	Item Number	Designation	Number of units	Lead time
6	09 11 02 288-93	cover	1.00	20
2	90 24 03 280 00 90	nipple	1.00	2
3	09 31 11 112 90	pin	1.00	60
7	90 27 62 011 00-93	rosette	1.00	20
1	09 24 03 072 10 90	nipple	1.00	2
5	90 20 66 007 00-93	handle	1.00	20
8	90 15 05 064 01 90	cartridge	1.00	2
4	90 28 22 351 01-93	spout	1.00	-
Spare part can no longer be ordered, please order the replacement item				
9	90 30 09 064 00 90	key	1.00	2