



# MEM Wall-mounted single-lever mixer with cover plate without drain - Brushed Dark Platinum

---

36 865 782



- 9-3/4" Projection
  - Rigid spout
  - Rectangular aerated stream
  - Spout hole diameter 1-1/2"
  - Hole diameter single-lever mixer 2-1/4"
  - Cover plate 3-1/8" x 7-1/8"
  - Water flow rate limited to max. 1.2 gpm
  - lead-free
  - This product can help a building meet the requirements of Green Building Rating Systems, e.g. LEED®, BREEAM®, DGNB
- (ADA)**

(ADA)

## Required article

---

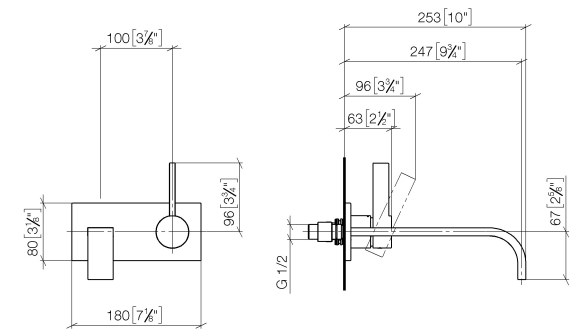


- |   |                      |
|---|----------------------|
| <b>Rough for wall-mounted faucet -</b>  | <b>35 860 970-90</b> |
| •Max. rough in depth "  | <b>0010</b>          |
| •Min. rough in depth "  |                      |
| •Rough can be rotated to position the lever on top or to the left of the spout. |                      |

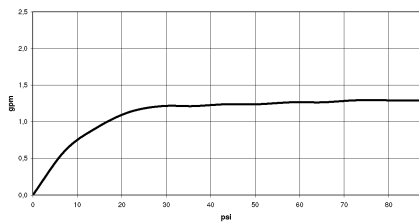


# MEM Wall-mounted single-lever mixer with cover plate without drain - Brushed Dark Platinum

36 865 782



## Flow rate chart



## Codes & Standards

ADA	ASME A112.18.1	ASME A112.18.1/CSA B125.1	California Energy Commission (CEC)
cUPC	EPA WaterSense	NSF/ANSI 372	NSF/ANSI/CAN 61
NSF372	NSF61	Water Sense	WaterSense





MEM Wall-mounted single-lever mixer with cover plate without drain - Brushed Dark Platinum

---

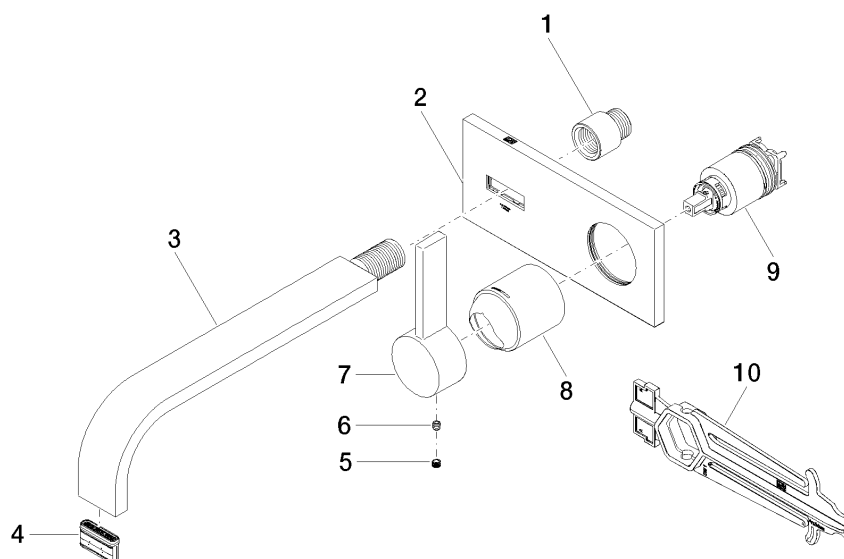
36 865 782  
Certificates

---

IAPMO_N-4976	IAPMO_6397	IAPMO_8834	IAPMO_4976 (
--------------	------------	------------	--------------

## MEM Wall-mounted single-lever mixer with cover plate without drain - Brushed Dark Platinum

36 865 782



### Spare parts list

Number	Item Number	Designation	Number of units	Lead time
1	09 24 03 072 10 90	nipple	1	2
2	90 11 01 170 00-99	plate	1	20
3	04 28 22 148 10-99	spout	1	20
4	90 29 03 118 00 90	aerator	1	2
5	90 31 20 109 00 90	plug	1	2
6	90 31 11 030 00 90	pin	1	2
7	09 20 78 058-99	handle	1	20
8	09 11 02 288-99	cover	1	20
9	90 15 05 064 01 90	cartridge	1	2
10	90 30 09 064 00 90	key	1	2