

## META Wall-mounted single-lever mixer without drain - Brushed Dark Platinum

META

36 867 660 Product version from 7/1/2023



- 4-7/8" Projection
- Rigid spout
- Round aerated stream
- Spout hole diameter 1-3/8"
- Hole diameter single-lever mixer 2-1/4"
- Mixer with flange Ø 3-1/8"
- 2-1/8" diameter flange for spout
- Water flow rate limited to max. 1.2 gpm
- lead-free
- This product can help a building meet the requirements of Green Building Rating Systems, e.g. LEED®, BREEAM®, DGNB (ADA)

(ADA)

|   |                               |                    |
|---|-------------------------------|--------------------|
|    | Brushed Dark Platinum         | 36 867 660-99 0010 |
|    | Chrome                        | 36 867 660-00 0010 |
|    | Brushed Platinum              | 36 867 660-06 0010 |
|    | Light gold                    | 36 867 660-26 0010 |
|    | Brushed Light Gold            | 36 867 660-27 0010 |
|    | Matte Black                   | 36 867 660-33 0010 |
|    | Brushed Dark Brass            | 36 867 660-39 0010 |
|    | Brushed Bronze                | 36 867 660-42 0010 |
|   | Brushed Champagne (22kt Gold) | 36 867 660-46 0010 |
|  | Champagne (22kt Gold)         | 36 867 660-47 0010 |
|  | Brushed Chrome                | 36 867 660-93 0010 |

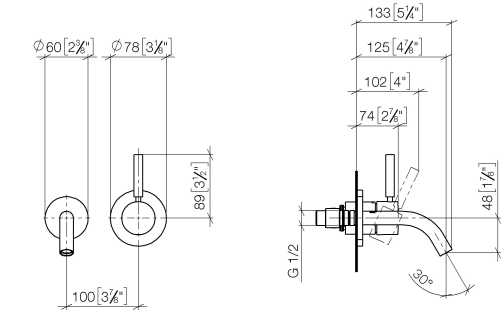
### Required article



- Rough for wall-mounted faucet -** 35 860 970-90 0010
- Min. rough in depth 3-1/8"
  - Max. rough in depth 3-3/4"
  - Rough can be rotated to position the lever on top or to the left of the spout.

36 867 660    Product version from 7/1/2023

mm [inches]

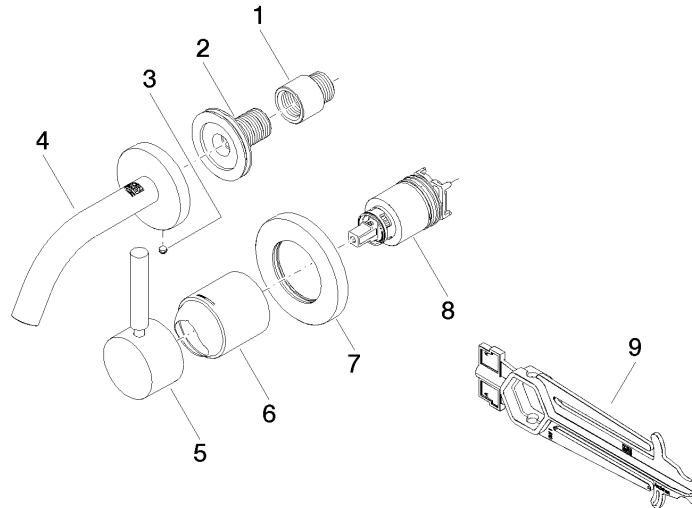


Codes & Standards

|                |                |                                    |            |
|----------------|----------------|------------------------------------|------------|
| ADA            | ASME A112.18.1 | California Energy Commission (CEC) | cUPC       |
| EPA WaterSense | NSF372         | NSF61                              | WaterSense |

Certificates and sustainability

|              |            |              |            |
|--------------|------------|--------------|------------|
| IAPMO_N-4976 | IAPMO_6397 | IAPMO_4976 ( | IAPMO_8834 |
|--------------|------------|--------------|------------|



## Spare parts list

| Number | Item Number        | Designation | Number of units | Lead time |
|--------|--------------------|-------------|-----------------|-----------|
| 1      | 09 24 03 072 10 90 | nipple      | 1.00            | 2         |
| 6      | 09 11 02 288-99    | cover       | 1.00            | 20        |
| 8      | 90 15 05 064 01 90 | cartridge   | 1.00            | 2         |
| 5      | 90 20 66 007 00-99 | handle      | 1.00            | 20        |
| 4      | 90 28 22 363 00-99 | spout       | 1.00            | 20        |
| 9      | 90 30 09 064 00 90 | key         | 1.00            | 2         |
| 7      | 90 27 62 011 00-99 | rosette     | 1.00            | 20        |
| 2      | 90 24 03 280 00 90 | nipple      | 1.00            | 2         |
| 3      | 09 31 11 148 90    | pin         | 1.00            | 2         |