



# META META SLIM Wall-mounted single-lever mixer without drain - Brushed Champagne (22kt Gold)

36 867 662    Product version from 7/1/2023



- 4-7/8" Projection
  - Rigid spout
  - Round aerated stream
  - Hole diameter single-lever mixer 2-1/4"
  - Spout hole diameter 1-3/8"
  - Mixer with flange Ø 3-1/8"
  - 2-1/8" diameter flange for spout
  - Water flow rate limited to max. 1.2 gpm
  - lead-free
  - This product can help a building meet the requirements of Green Building Rating Systems, e.g. LEED®, BREEAM®, DGNB
- (ADA)

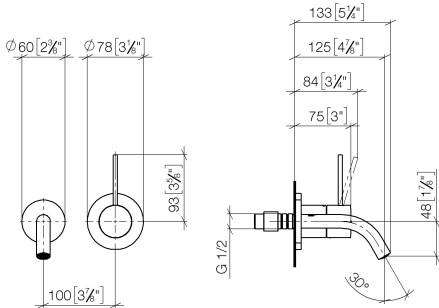
	Brushed Champagne (22kt Gold)	36 867 662-46 0010
	Chrome	36 867 662-00 0010
	Brushed Platinum	36 867 662-06 0010
	Light gold	36 867 662-26 0010
	Brushed Light Gold	36 867 662-27 0010
	Matte Black	36 867 662-33 0010
	Brushed Bronze	36 867 662-42 0010
	Champagne (22kt Gold)	36 867 662-47 0010
	Brushed Chrome	36 867 662-93 0010
	Brushed Dark Platinum	36 867 662-99 0010



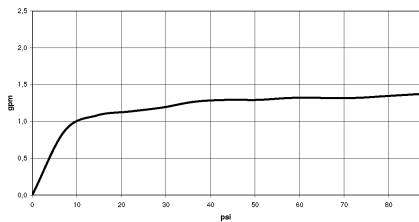
META META SLIM Wall-mounted single-lever mixer without drain - Brushed Champagne (22kt Gold)

36 867 662    Product version from 7/1/2023

mm [inches]



Flow rate chart



Codes & Standards

ASME A112.18.1

California Energy  
Commission  
(CEC)

cUPC

NSF372

NSF61



META META SLIM Wall-mounted single-lever mixer without drain - Brushed  
Champagne (22kt Gold)

---

36 867 662 Product version from 7/1/2023

Certificates

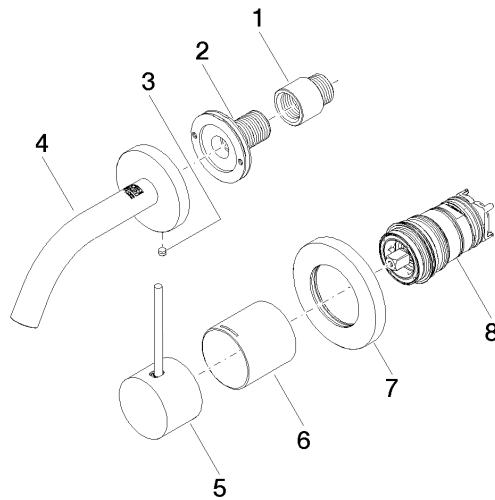
---

IAPMO\_N-4976      IAPMO\_6397      IAPMO\_4976 (

## META META SLIM Wall-mounted single-lever mixer without drain - Brushed Champagne (22kt Gold)

36 867 662 Product version from 7/1/2023

Parts for other  
finishes can be found  
here: [Chrome](#)



### Spare parts list

Number	Item Number	Designation	Number of units	Lead time
1	09 24 03 072 10 90	nipple	1	2
2	90 24 03 280 00 90	nipple	1	2
3	09 31 11 112 90	pin	1	60
4	90 28 22 363 00-46	spout	1	30
5	90 20 66 022 00-46	handle	1	30
6	09 11 02 336-46	sleeve	1	60
7	90 27 62 011 00-46	rosette	1	30
8	90 15 05 044 02 90	cartridge	1	2