

Pressure Balance Valve without diverter

SERIES SPECIFIC

36 900 660

Product version from 5/1/2024

- Cover plate Ø 5-7/8"



	Brushed Platinum	36 900 660-06
	Chrome	36 900 660-00
	Platinum	36 900 660-08
	Dark Chrome	36 900 660-19
	Light gold	36 900 660-26
	Brushed Light Gold	36 900 660-27
	Brushed Durabrass (23kt Gold)	36 900 660-28
	Matte Black	36 900 660-33
	Brushed Dark Brass	36 900 660-39
	Brushed Bronze	36 900 660-42
	Brushed Champagne (22kt Gold)	36 900 660-46
	Champagne (22kt Gold)	36 900 660-47
	Brushed Chrome	36 900 660-93
	Brushed Dark Platinum	36 900 660-99

Required article



- Pressure Balance Valve -

●

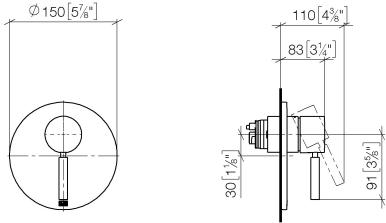
Min. rough in depth 3-1/8"

●

Max. rough in depth 4-1/8"

35 920 970 90

mm [inches]



Flow rate chart



### Codes & Standards

ASME A112.18.1

cUPC



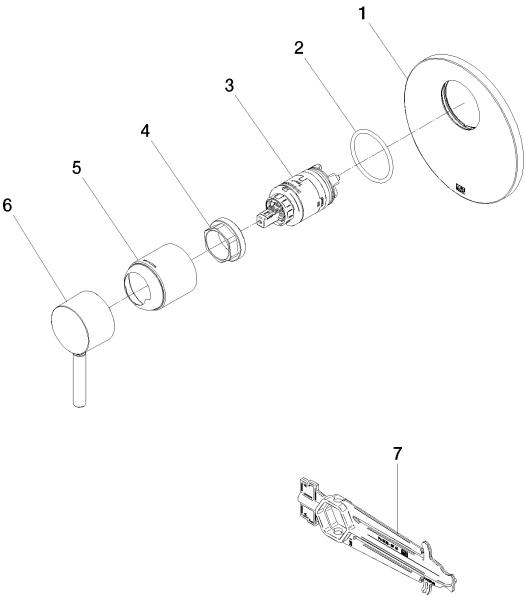
Pressure Balance Valve without diverter

SERIES SPECIFIC

36 900 660 Product version from 5/1/2024

Certificates and sustainability

IAPMO\_4976 (



Spare parts list

Number	Item Number	Designation	Number of units	Lead time
1	09 11 02 262-06	plate	1.00	10
2	09 14 10 084 90	seal	1.00	2
7	90 30 09 064 00 90	key	1.00	2
6	90 20 66 004 00-06	handle	1.00	10
3	90 15 05 069 00 90	cartridge	1.00	2
5	09 11 02 260-06	sleeve	1.00	10
4	09 24 04 448 90	nut	1.00	2