

Pressure Balance Valve without diverter

SERIES SPECIFIC

36 900 660

Product version from 5/1/2024

- Cover plate Ø 5-7/8"



	Light gold	36 900 660-26
	Chrome	36 900 660-00
	Brushed Platinum	36 900 660-06
	Platinum	36 900 660-08
	Dark Chrome	36 900 660-19
	Brushed Light Gold	36 900 660-27
	Brushed Durabronze (23kt Gold)	36 900 660-28
	Matte Black	36 900 660-33
	Brushed Bronze	36 900 660-42
	Brushed Champagne (22kt Gold)	36 900 660-46
	Champagne (22kt Gold)	36 900 660-47
	Brushed Chrome	36 900 660-93
	Brushed Dark Platinum	36 900 660-99

Required article



- Pressure Balance Valve -

●Min. rough in depth 3-1/8"

●Max. rough in depth 4-1/8"

35 920 970 90

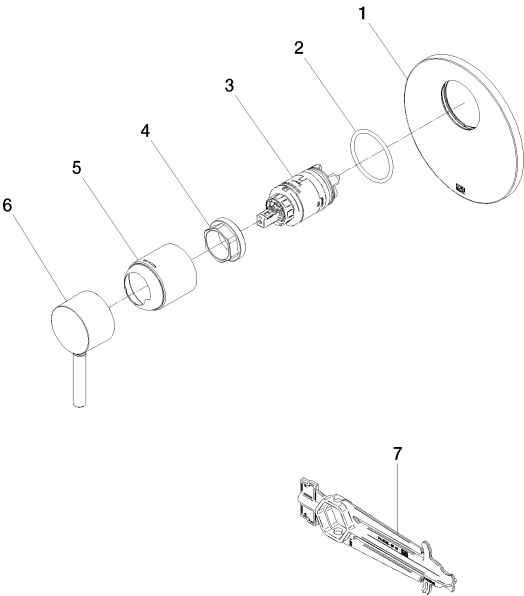
36 900 660 Product version from 5/1/2024

mm [inches]



Flow rate chart





Spare parts list

Number	Item Number	Designation	Number of units	Lead time
	2 09 14 10 084 90	seal	1.00	2
	6 90 20 66 004 00-26	handle	1.00	30
	7 90 30 09 064 00 90	key	1.00	2
	1 09 11 02 262-26	plate	1.00	30
	4 09 24 04 448 90	nut	1.00	2
	5 09 11 02 260-26	sleeve	1.00	60
	3 90 15 05 069 00 90	cartridge	1.00	2