

Pressure Balance Valve without diverter

36 900 660
Product version from 5/1/2024



- Cover plate Ø 5-7/8"

	Brushed Light Gold	36 900 660-27
	Chrome	36 900 660-00
	Brushed Platinum	36 900 660-06
	Platinum	36 900 660-08
	Dark Chrome	36 900 660-19
	Light gold	36 900 660-26
	Brushed Durabrass (23kt Gold)	36 900 660-28
	Matte Black	36 900 660-33
	Brushed Dark Brass	36 900 660-39
	Brushed Bronze	36 900 660-42
	Brushed Champagne (22kt Gold)	36 900 660-46
	Champagne (22kt Gold)	36 900 660-47
	Brushed Chrome	36 900 660-93
	Brushed Dark Platinum	36 900 660-99

Required article



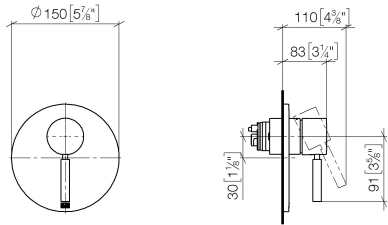
- Pressure Balance Valve -**
35 920 970 90

 - Min. rough in depth "
 - Max. rough in depth "

Pressure Balance Valve without diverter

36 900 660 Product version from 5/1/2024

mm [inches]

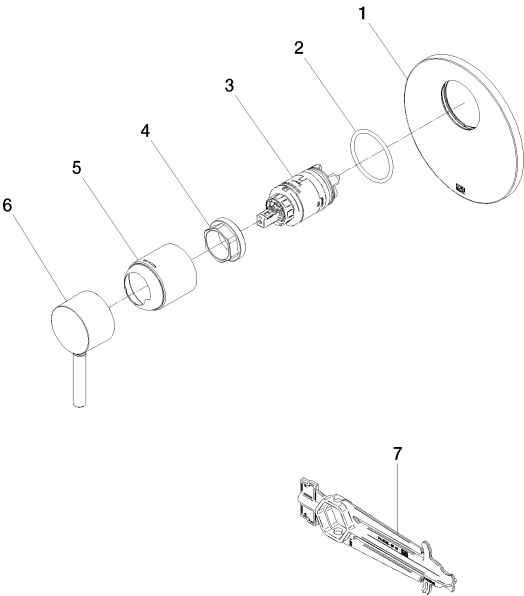


Flow rate chart



Pressure Balance Valve without diverter

36 900 660 Product version from 5/1/2024



Spare parts list

Number	Item Number	Designation	Number of units	Lead time
1	09 11 02 262-27	plate	1	60
2	09 14 10 084 90	seal	1	2
3	90 15 05 069 00 90	cartridge	1	2
4	09 24 04 448 90	nut	1	2
5	90 20 66 004 00-27	handle	1	30
6	09 11 02 260-27	sleeve	1	60
7	90 30 09 064 00 90	key	1	2