



Pressure Balance Valve without diverter

SERIES SPECIFIC

36 900 670    Product version from 5/1/2024



- Cover plate 3-1/2" x 5-7/8"

|   |                               |               |
|---|-------------------------------|---------------|
|    | Matte Black                   | 36 900 670-33 |
|    | Chrome                        | 36 900 670-00 |
|    | Brushed Platinum              | 36 900 670-06 |
|    | Platinum                      | 36 900 670-08 |
|    | Dark Chrome                   | 36 900 670-19 |
|    | Brushed Light Gold            | 36 900 670-27 |
|    | Brushed Durabrass (23kt Gold) | 36 900 670-28 |
|    | Brushed Champagne (22kt Gold) | 36 900 670-46 |
|    | Champagne (22kt Gold)         | 36 900 670-47 |
|   | Brushed Chrome                | 36 900 670-93 |
|  | Brushed Dark Platinum         | 36 900 670-99 |

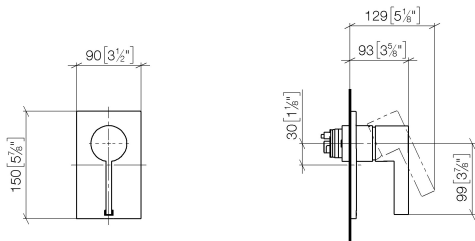
Required article



- Pressure Balance Valve -**                      35 920 970 90
- Min. rough in depth 3-1/8"
  - Max. rough in depth 4-1/8"

36 900 670    Product version from 5/1/2024

mm [inches]



Flow rate chart



### Codes & Standards

ASME A112.18.1      cUPC



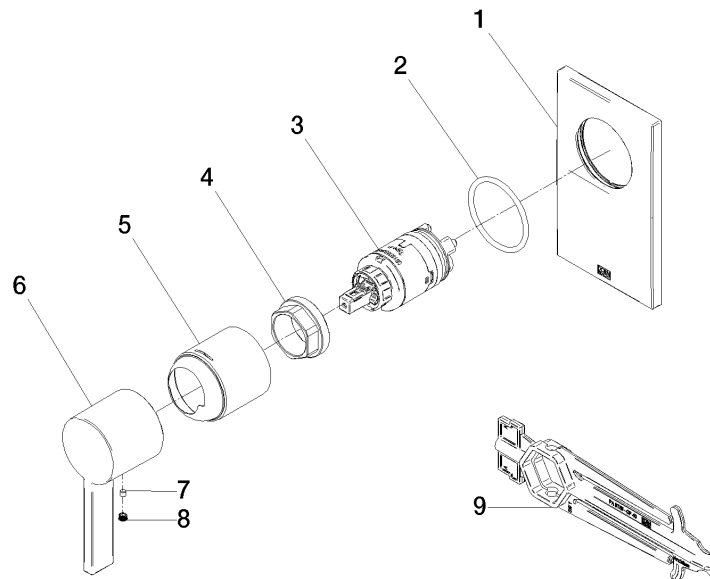
Pressure Balance Valve without diverter

SERIES SPECIFIC

36 900 670 Product version from 5/1/2024

Certificates and sustainability

IAPMO\_4976 (



## Spare parts list

| Number | Item Number        | Designation | Number of units | Lead time |
|--------|--------------------|-------------|-----------------|-----------|
| 5      | 09 11 02 260-33    | sleeve      | 1.00            | 30        |
| 8      | 90 31 20 109 00 90 | plug        | 1.00            | 2         |
| 4      | 09 24 04 448 90    | nut         | 1.00            | 2         |
| 6      | 09 20 67 007-33    | handle      | 1.00            | 60        |
| 9      | 90 30 09 064 00 90 | key         | 1.00            | 2         |
| 7      | 09 31 11 099 90    | pin         | 1.00            | 2         |
| 2      | 09 14 10 084 90    | seal        | 1.00            | 2         |
| 3      | 90 15 05 069 00 90 | cartridge   | 1.00            | 2         |
| 1      | 09 11 02 257-33    | plate       | 1.00            | 60        |