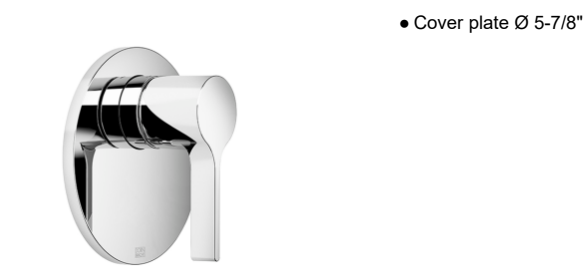


Pressure Balance Valve without diverter

VAIA

36 900 809

Product version from 5/1/2023



	Dark Chrome	36 900 809-19
	Chrome	36 900 809-00
	Brushed Platinum	36 900 809-06
	Platinum	36 900 809-08
	Brushed Light Gold	36 900 809-27
	Brushed Durabronze (23kt Gold)	36 900 809-28
	Brushed Bronze	36 900 809-42
	Brushed Champagne (22kt Gold)	36 900 809-46
	Champagne (22kt Gold)	36 900 809-47
	Brushed Dark Platinum	36 900 809-99

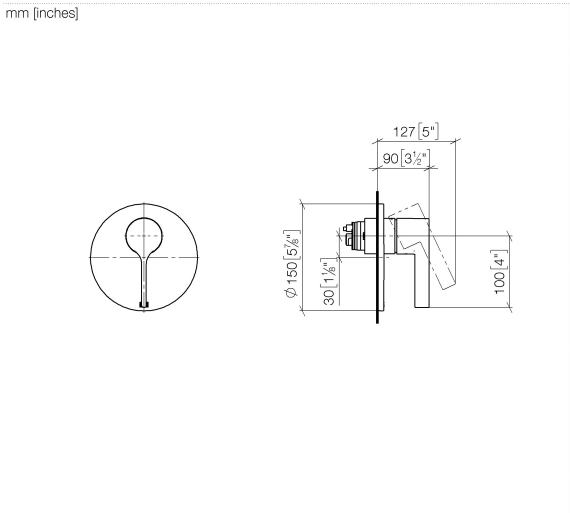
Required article

	<div> <div>Pressure Balance Valve -</div> <div> <ul style="list-style-type: none"> <li>•Min. rough in depth 3-1/8"</li> <li>•Max. rough in depth 4-1/8"</li> </ul> </div> </div> <div>35 920 970 90</div>
--	---

Pressure Balance Valve without diverter

VAIA

36 900 809    Product version from 5/1/2023



Flow rate chart



Codes & Standards

ASME A112.18.1    cUPC



## Pressure Balance Valve without diverter

---

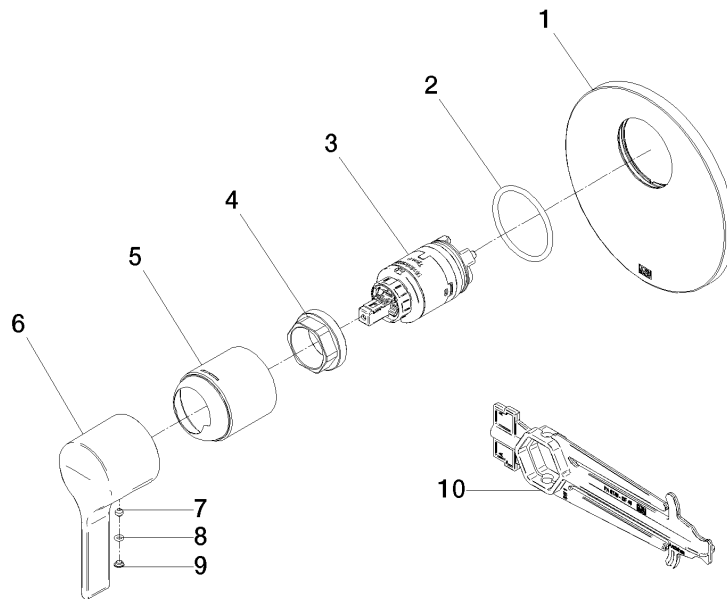
VAIA

36 900 809 Product version from 5/1/2023

### Certificates and sustainability

---

IAPMO\_4976 (



## Spare parts list

Number	Item Number	Designation	Number of units	Lead time
10	90 30 09 064 00 90	key	1.00	2
3	90 15 05 069 00 90	cartridge	1.00	2
9	09 31 20 087-19	plug	1.00	60
1	09 11 02 262-19	plate	1.00	20
5	09 11 02 260-19	sleeve	1.00	20
4	09 24 04 448 90	nut	1.00	2
2	09 14 10 084 90	seal	1.00	2
8	09 14 10 133 90	seal	1.00	2
7	90 31 11 063 00 90	pin	1.00	2
6	09 20 80 023-19	handle	1.00	60