




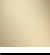



Pressure Balance Valve without diverter

LISSE

36 900 845    Product version from 5/1/2024

- Cover plate 3-1/2" x 5-7/8"



	Chrome	36 900 845-00
	Brushed Platinum	36 900 845-06
	Dark Chrome	36 900 845-19
	Brushed Light Gold	36 900 845-27
	Matte Black	36 900 845-33
	Brushed Chrome	36 900 845-93
	Brushed Dark Platinum	36 900 845-99

Required article



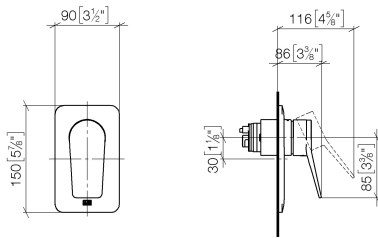
**Pressure Balance Valve -**

- Min. rough in depth 3-1/8"
- Max. rough in depth 4-1/8"

35 920 970 90

36 900 845 Product version from 5/1/2024

mm [inches]

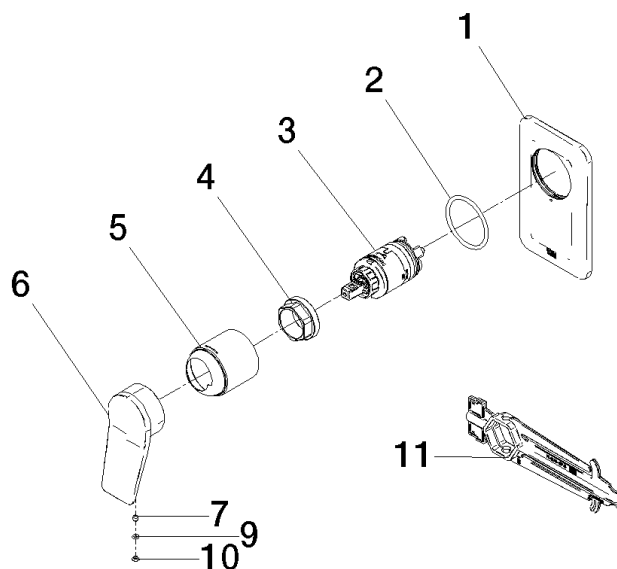


#### Codes & Standards

ASME A112.18.1 cUPC

#### Certificates and sustainability

IAPMO\_4976 (



## Spare parts list

Number	Item Number	Designation	Number of units	Lead time
	10 09 31 20 087-00	plug	1.00	10
	5 09 11 02 260-00	sleeve	1.00	10
	2 09 14 10 084 90	seal	1.00	2
	3 90 15 05 069 00 90	cartridge	1.00	2
	9 09 14 10 133 90	seal	1.00	2
	7 90 31 11 030 00 90	pin	1.00	2
	4 09 24 04 448 90	nut	1.00	2
	6 09 20 84 022-00	handle	1.00	10
	11 90 30 09 064 00 90	key	1.00	2
	1 09 11 02 300-00	plate	1.00	10