

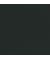


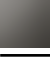



Pressure Balance Valve without diverter

LISSE

36 900 845    Product version from 5/1/2024



- Cover plate 3-1/2" x 5-7/8"

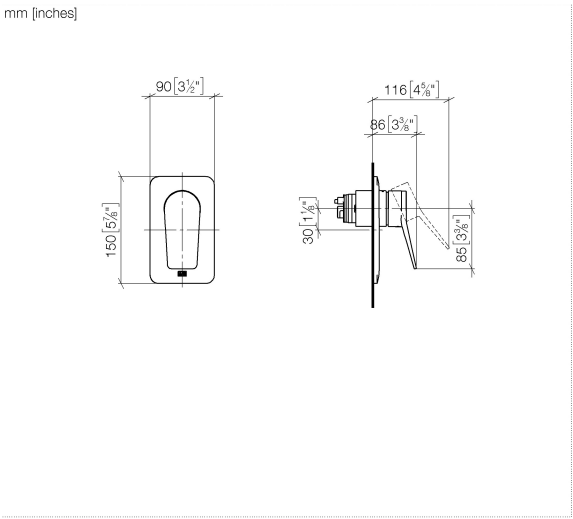
	Matte Black	36 900 845-33
	Chrome	36 900 845-00
	Brushed Platinum	36 900 845-06
	Dark Chrome	36 900 845-19
	Brushed Light Gold	36 900 845-27
	Brushed Chrome	36 900 845-93
	Brushed Dark Platinum	36 900 845-99

Required article



- Pressure Balance Valve -**
- Min. rough in depth 3-1/8"
  - Max. rough in depth 4-1/8"

35 920 970 90

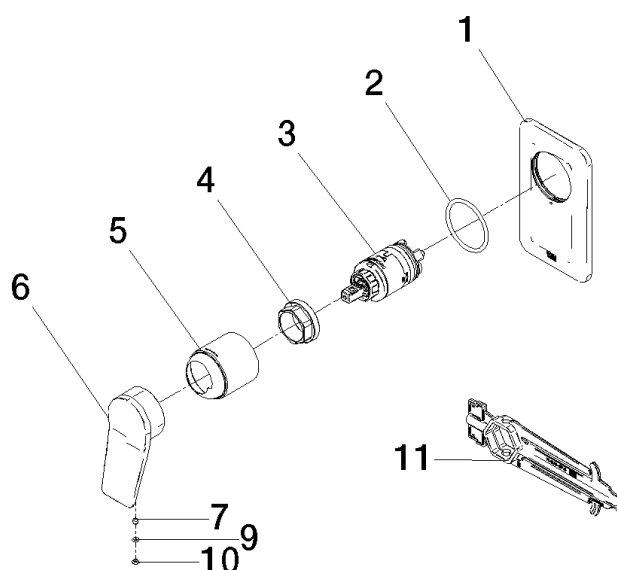


**Codes & Standards**

ASME A112.18.1      cUPC

**Certificates and sustainability**

IAPMO\_4976 (



## Spare parts list

Number	Item Number	Designation	Number of units	Lead time
	10 09 31 20 087-33	plug	1.00	60
	5 09 11 02 260-33	sleeve	1.00	30
	9 09 14 10 133 90	seal	1.00	2
	3 90 15 05 069 00 90	cartridge	1.00	2
	4 09 24 04 448 90	nut	1.00	2
	1 09 11 02 300-33	plate	1.00	60
	7 90 31 11 030 00 90	pin	1.00	2
	2 09 14 10 084 90	seal	1.00	2
	11 90 30 09 064 00 90	key	1.00	2
	6 09 20 84 022-33	handle	1.00	30