



Pressure Balance Valve without diverter

LISSE

36 900 845 Product version from 5/1/2024



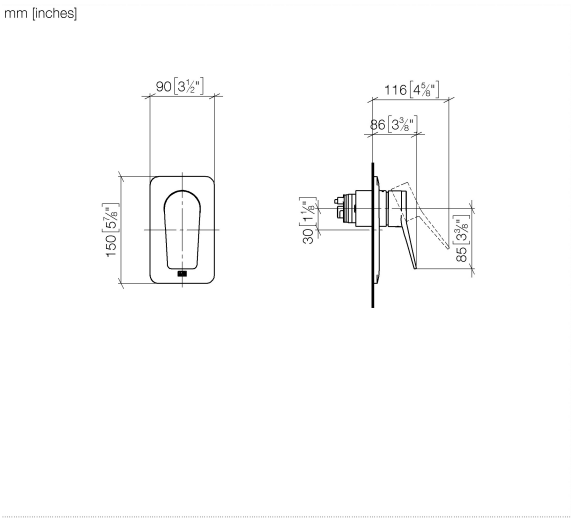
- Cover plate 3-1/2" x 5-7/8"

	Brushed Dark Platinum	36 900 845-99
	Chrome	36 900 845-00
	Brushed Platinum	36 900 845-06
	Dark Chrome	36 900 845-19
	Brushed Light Gold	36 900 845-27
	Matte Black	36 900 845-33
	Brushed Chrome	36 900 845-93

Required article



- Pressure Balance Valve -** 35 920 970 90
- Min. rough in depth 3-1/8"
 - Max. rough in depth 4-1/8"

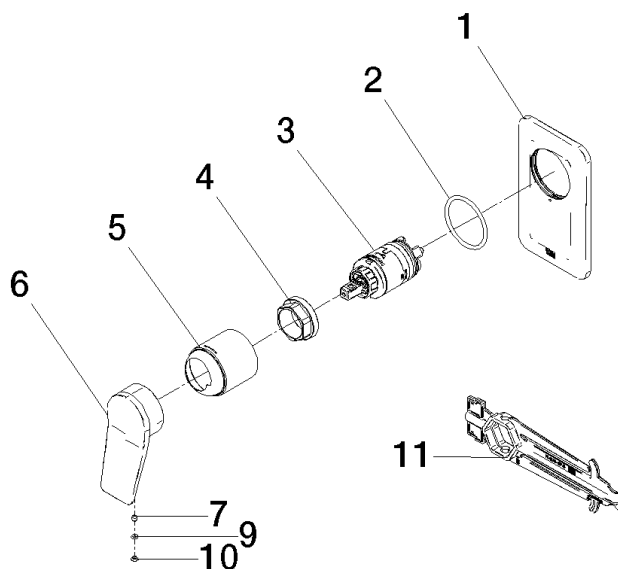


Codes & Standards

ASME A112.18.1 cUPC

Certificates and sustainability

IAPMO_4976 (



Spare parts list

Number	Item Number	Designation	Number of units	Lead time
	11 90 30 09 064 00 90	key	1.00	2
	4 09 24 04 448 90	nut	1.00	2
	3 90 15 05 069 00 90	cartridge	1.00	2
	9 09 14 10 133 90	seal	1.00	2
	5 09 11 02 260-99	sleeve	1.00	20
	6 09 20 84 022-99	handle	1.00	60
	1 09 11 02 300-99	plate	1.00	60
	7 90 31 11 030 00 90	pin	1.00	2
	10 09 31 20 087-99	plug	1.00	60
	2 09 14 10 084 90	seal	1.00	2