

Pressure Balance Valve with diverter

SERIES SPECIFIC

36 915 660
Product version from 5/1/2024



- Automatic diverter
- Cover plate Ø 5-7/8"

	Dark Chrome	36 915 660-19
	Chrome	36 915 660-00
	Brushed Platinum	36 915 660-06
	Platinum	36 915 660-08
	Light gold	36 915 660-26
	Brushed Light Gold	36 915 660-27
	Brushed Durabrass (23kt Gold)	36 915 660-28
	Matte Black	36 915 660-33
	Brushed Dark Brass	36 915 660-39
	Brushed Bronze	36 915 660-42
	Brushed Champagne (22kt Gold)	36 915 660-46
	Champagne (22kt Gold)	36 915 660-47
	Brushed Chrome	36 915 660-93
	Brushed Dark Platinum	36 915 660-99

Required article

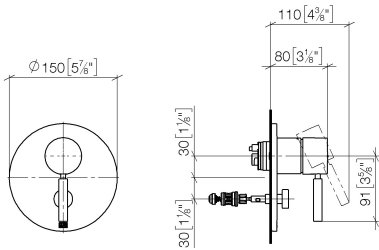


- Pressure Balance Valve -**

- Min. rough in depth 3-1/8"
  - Max. rough in depth 4-1/8"

35 920 970 90

mm [inches]



Flow rate chart



Codes & Standards

ASME A112.18.1

cUPC



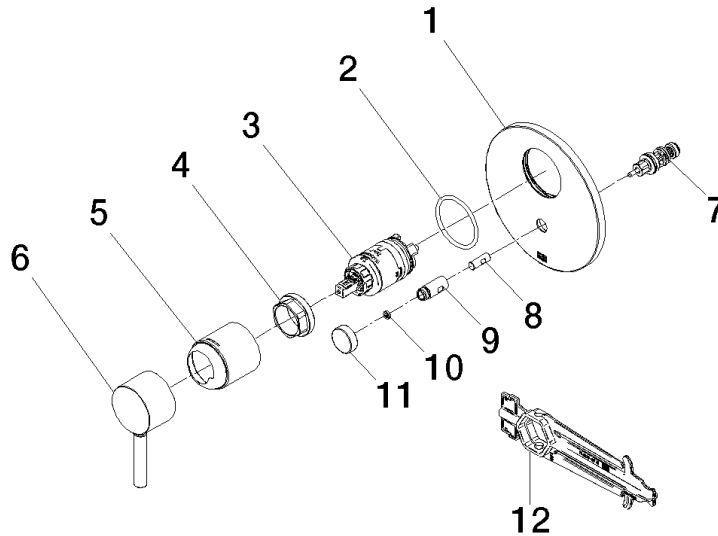
## Pressure Balance Valve with diverter

SERIES SPECIFIC

36 915 660 Product version from 5/1/2024

Certificates and sustainability

IAPMO\_4976 (



## Spare parts list

Number	Item Number	Designation	Number of units	Lead time
	10 09 24 03 227 90	screw	2.00	2
	9 09 31 09 139-19	pull-rod	1.00	20
	2 09 14 10 084 90	seal	1.00	2
	3 90 15 05 069 00 90	cartridge	1.00	2
	11 09 20 78 056-19	handle	1.00	20
	12 90 30 09 064 00 90	key	1.00	2
	6 90 20 66 004 00-19	handle	1.00	20
	4 09 24 04 448 90	nut	1.00	2
	7 90 21 34 081 00 90	diverter	1.00	2
	5 09 11 02 260-19	sleeve	1.00	20
	8 09 24 03 226 90	adaptor	1.00	2
	1 09 11 02 261-19	plate	1.00	20