



Pressure Balance Valve with diverter

SERIES SPECIFIC

36 915 660 Product version from 5/1/2024



- Automatic diverter
- Cover plate Ø 5-7/8"

	Brushed Dark Platinum	36 915 660-99
	Chrome	36 915 660-00
	Brushed Platinum	36 915 660-06
	Platinum	36 915 660-08
	Dark Chrome	36 915 660-19
	Light gold	36 915 660-26
	Brushed Light Gold	36 915 660-27
	Brushed Durabrass (23kt Gold)	36 915 660-28
	Matte Black	36 915 660-33
	Brushed Bronze	36 915 660-42
	Brushed Champagne (22kt Gold)	36 915 660-46
	Champagne (22kt Gold)	36 915 660-47
	Brushed Chrome	36 915 660-93

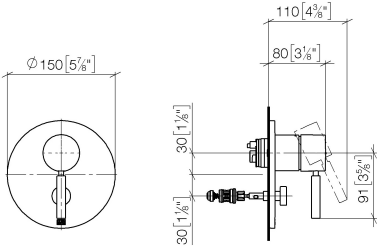
Required article



- Pressure Balance Valve -**
- Min. rough in depth 3-1/8"
 - Max. rough in depth 4-1/8"

35 920 970 90

mm [inches]



Flow rate chart



Codes & Standards

ASME A112.18.1

cUPC



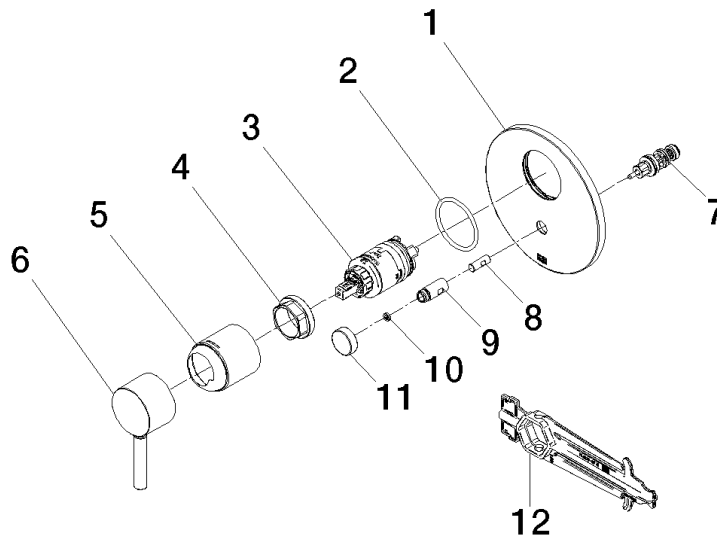
Pressure Balance Valve with diverter

SERIES SPECIFIC

36 915 660 Product version from 5/1/2024

Certificates and sustainability

IAPMO_4976 (



Spare parts list

Number	Item Number	Designation	Number of units	Lead time
6	90 20 66 004 00-99	handle	1.00	20
9	09 31 09 139-99	pull-rod	1.00	20
11	09 20 78 056-99	handle	1.00	20
12	90 30 09 064 00 90	key	1.00	2
5	09 11 02 260-99	sleeve	1.00	20
10	09 24 03 227 90	screw	2.00	2
3	90 15 05 069 00 90	cartridge	1.00	2
8	09 24 03 226 90	adaptor	1.00	2
1	09 11 02 261-99	plate	1.00	20
2	09 14 10 084 90	seal	1.00	2
4	09 24 04 448 90	nut	1.00	2
7	90 21 34 081 00 90	diverter	1.00	2