

# Pressure Balance Valve with diverter

36 915 670    Product version from 5/1/2024



- Automatic diverter
- Cover plate 3-1/2" x 5-7/8"

	Chrome	36 915 670-00
	Brushed Platinum	36 915 670-06
	Platinum	36 915 670-08
	Dark Chrome	36 915 670-19
	Brushed Light Gold	36 915 670-27
	Brushed Durabrass (23kt Gold)	36 915 670-28
	Matte Black	36 915 670-33
	Brushed Champagne (22kt Gold)	36 915 670-46
	Champagne (22kt Gold)	36 915 670-47
	Brushed Chrome	36 915 670-93
	Brushed Dark Platinum	36 915 670-99

## Required article



- Pressure Balance Valve -**

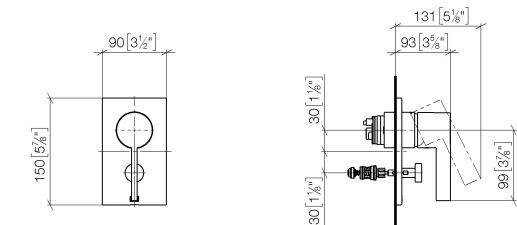
35 920 970 90

- Min. rough in depth "
  - Max. rough in depth "

# Pressure Balance Valve with diverter

36 915 670    Product version from 5/1/2024

mm [inches]



## Flow rate chart



## Codes & Standards

ASME A112.18.1

cUPC



# Pressure Balance Valve with diverter

---

36 915 670    Product version from 5/1/2024

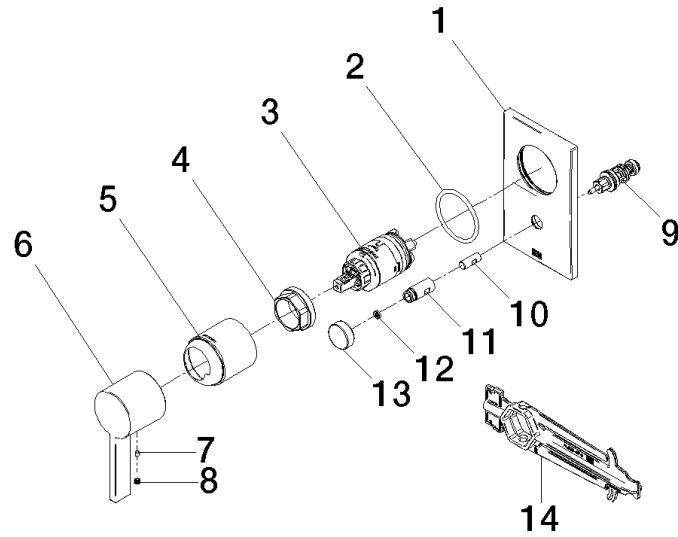
## Certificates

---

IAPMO\_4976 (

# Pressure Balance Valve with diverter

36 915 670 Product version from 5/1/2024



## Spare parts list

Number	Item Number	Designation	Number of units	Lead time
1	09 11 02 258-00	plate	1	10
2	09 14 10 084 90	seal	1	2
3	90 15 05 069 00 90	cartridge	1	2
4	09 24 04 448 90	nut	1	2
5	09 11 02 260-00	sleeve	1	10
6	09 20 67 007-00	handle	1	10
7	09 31 11 099 90	pin	1	2
8	90 31 20 109 00 90	plug	1	2
9	90 21 34 081 00 90	diverter	1	2
10	09 24 03 226 90	adaptor	1	2
11	09 31 09 139-00	pull-rod	1	10
12	09 24 03 227 90	screw	1	2
13	09 20 78 056-00	handle	1	10
14	90 30 09 064 00 90	key	1	2