



Pressure Balance Valve with diverter

SERIES SPECIFIC

36 915 670 Product version from 5/1/2024



- Automatic diverter
- Cover plate 3-1/2" x 5-7/8"

	Brushed Light Gold	36 915 670-27
	Chrome	36 915 670-00
	Brushed Platinum	36 915 670-06
	Platinum	36 915 670-08
	Dark Chrome	36 915 670-19
	Brushed Durabronze (23kt Gold)	36 915 670-28
	Matte Black	36 915 670-33
	Brushed Champagne (22kt Gold)	36 915 670-46
	Champagne (22kt Gold)	36 915 670-47
	Brushed Chrome	36 915 670-93
	Brushed Dark Platinum	36 915 670-99

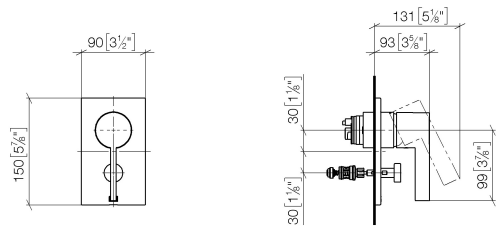
Required article



- Pressure Balance Valve -** 35 920 970 90
- Min. rough in depth 3-1/8"
 - Max. rough in depth 4-1/8"

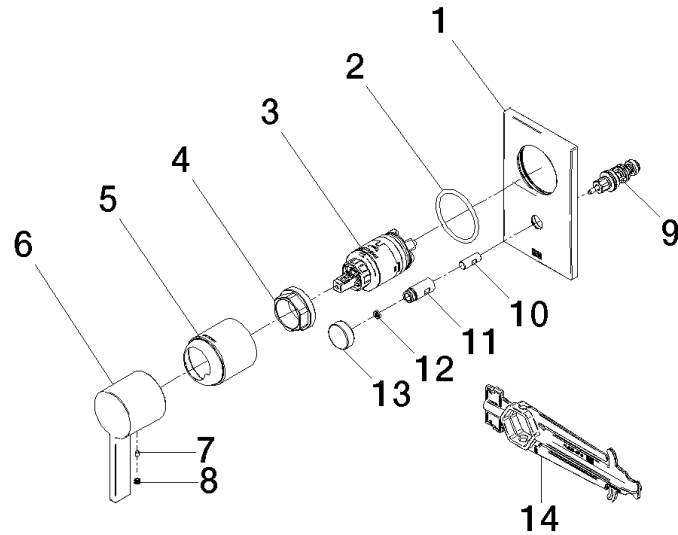
36 915 670 Product version from 5/1/2024

mm [inches]



Flow rate chart





Spare parts list

Number	Item Number	Designation	Number of units	Lead time
14	90 30 09 064 00 90	key	1.00	2
3	90 15 05 069 00 90	cartridge	1.00	2
13	09 20 78 056-27	handle	1.00	60
2	09 14 10 084 90	seal	1.00	2
10	09 24 03 226 90	adaptor	1.00	2
5	09 11 02 260-27	sleeve	1.00	60
1	09 11 02 258-27	plate	1.00	60
6	09 20 67 007-27	handle	1.00	60
4	09 24 04 448 90	nut	1.00	2
8	90 31 20 109 00 90	plug	1.00	2
9	90 21 34 081 00 90	diverter	1.00	2
7	09 31 11 099 90	pin	1.00	2
12	09 24 03 227 90	screw	1.00	2
11	09 31 09 139-27	pull-rod	1.00	60