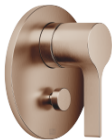


Pressure Balance Valve with diverter

VAIA

36 915 809
Product version from 5/1/2024



- Automatic diverter
- Cover plate Ø 5-7/8"

	Brushed Bronze	36 915 809-42
	Chrome	36 915 809-00
	Brushed Platinum	36 915 809-06
	Platinum	36 915 809-08
	Dark Chrome	36 915 809-19
	Brushed Light Gold	36 915 809-27
	Brushed Durabrass (23kt Gold)	36 915 809-28
	Brushed Champagne (22kt Gold)	36 915 809-46
	Champagne (22kt Gold)	36 915 809-47
	Brushed Dark Platinum	36 915 809-99

Required article



- Pressure Balance Valve -**
35 920 970 90

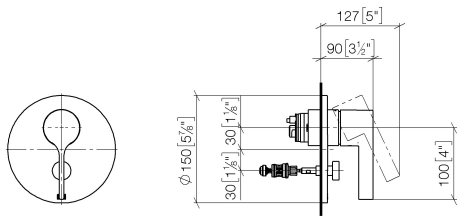
  - Min. rough in depth 3-1/8"
  - Max. rough in depth 4-1/8"

Pressure Balance Valve with diverter

VAIA

36 915 809    Product version from 5/1/2024

mm [inches]



Flow rate chart



Codes & Standards

ASME A112.18.1    cUPC



## Pressure Balance Valve with diverter

---

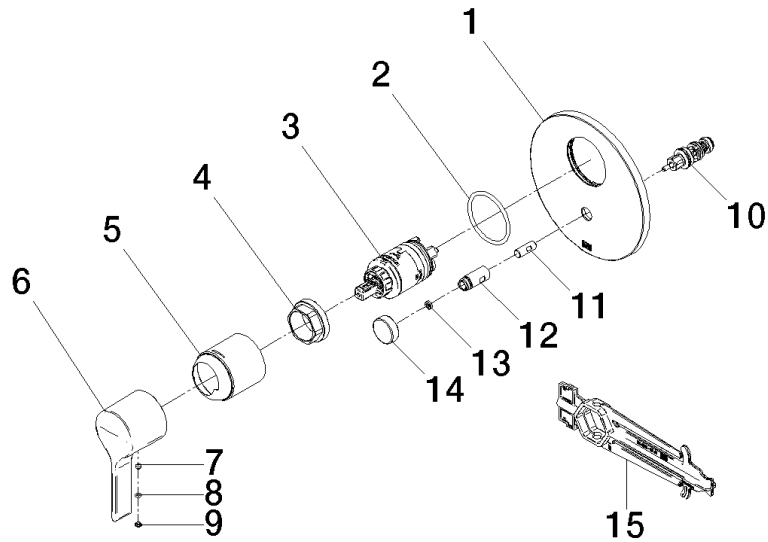
VAIA

36 915 809 Product version from 5/1/2024

### Certificates and sustainability

---

IAPMO\_4976 (



## Spare parts list

Number	Item Number	Designation	Number of units	Lead time
14	09 20 78 056-42	handle	1.00	60
12	09 31 09 139-42	pull-rod	1.00	60
5	09 11 02 260-42	sleeve	1.00	30
13	09 24 03 227 90	screw	1.00	2
1	09 11 02 261-42	plate	1.00	30
9	09 31 20 087-42	plug	1.00	60
4	09 24 04 448 90	nut	1.00	2
8	09 14 10 133 90	seal	1.00	2
10	90 21 34 081 00 90	diverter	1.00	2
7	90 31 11 063 00 90	pin	1.00	2
11	09 24 03 226 90	adaptor	1.00	2
3	90 15 05 069 00 90	cartridge	1.00	2
6	09 20 80 023-42	handle	1.00	60
2	09 14 10 084 90	seal	1.00	2
15	90 30 09 064 00 90	key	1.00	2