










Pressure Balance Valve with diverter

36 915 845 Product version from 5/1/2024



- Automatic diverter
- Cover plate 3-1/2" x 5-7/8"

	Chrome	36 915 845-00
	Brushed Platinum	36 915 845-06
	Dark Chrome	36 915 845-19
	Brushed Light Gold	36 915 845-27
	Matte Black	36 915 845-33
	Brushed Chrome	36 915 845-93
	Brushed Dark Platinum	36 915 845-99

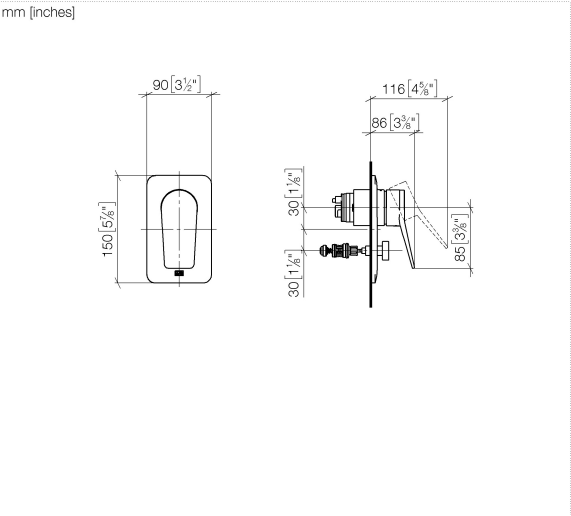
Required article



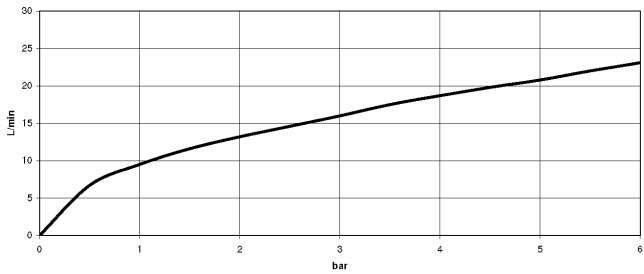
- | | |
|---------------------------------|---------------|
| Pressure Balance Valve - | 35 920 970 90 |
| •Min. rough in depth " | |
| •Max. rough in depth " | |

Pressure Balance Valve with diverter

36 915 845 Product version from 5/1/2024



Flow rate chart



Codes & Standards

ASME A112.18.1 cUPC



Pressure Balance Valve with diverter

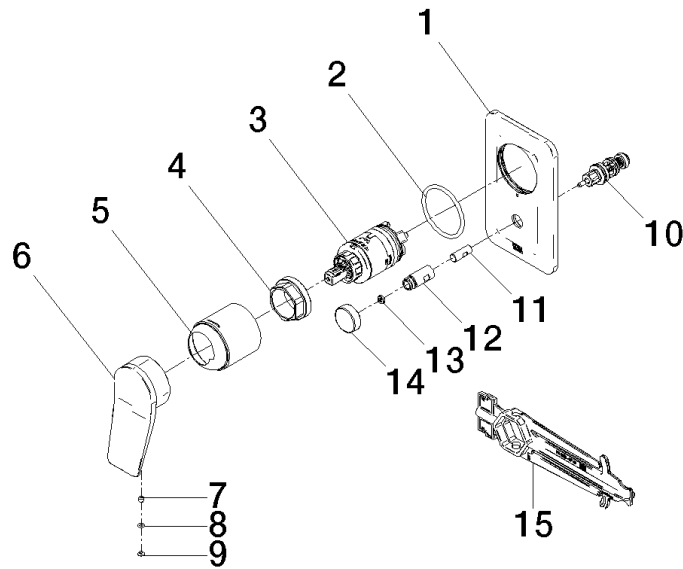
36 915 845 Product version from 5/1/2024

Certificates

IAPMO_4976 (

Pressure Balance Valve with diverter

36 915 845 Product version from 5/1/2024



Spare parts list

Number	Item Number	Designation	Number of units	Lead time
1	09 11 02 301-00	plate	1	10
2	09 14 10 084 90	seal	1	2
3	90 15 05 069 00 90	cartridge	1	2
4	09 24 04 448 90	nut	1	2
5	09 11 02 260-00	sleeve	1	10
6	09 20 84 022-00	handle	1	10
7	90 31 11 030 00 90	pin	1	2
8	09 14 10 133 90	seal	1	2
9	09 31 20 087-00	plug	1	10
10	90 21 34 081 00 90	diverter	1	2
11	09 24 03 226 90	adaptor	1	2
12	09 31 09 139-00	pull-rod	1	10
13	09 24 03 227 90	screw	1	2
14	09 20 78 056-00	handle	1	10
15	90 30 09 064 00 90	key	1	2