





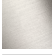




Pressure Balance Valve with diverter

LISSE

36 915 845 Product version from 5/1/2024



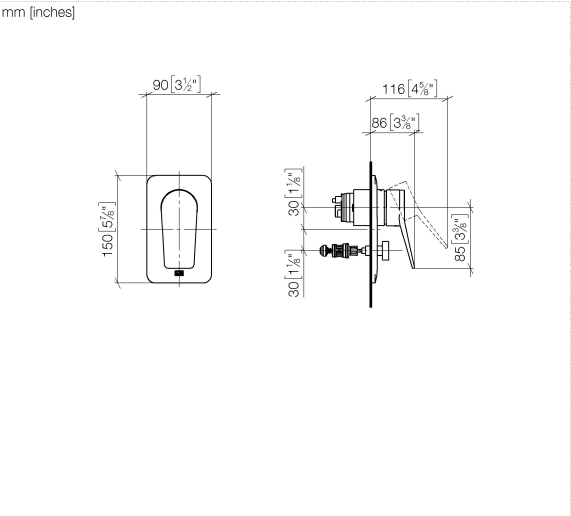
- Automatic diverter
- Cover plate 3-1/2" x 5-7/8"

	Matte Black	36 915 845-33
	Chrome	36 915 845-00
	Brushed Platinum	36 915 845-06
	Dark Chrome	36 915 845-19
	Brushed Light Gold	36 915 845-27
	Brushed Chrome	36 915 845-93
	Brushed Dark Platinum	36 915 845-99

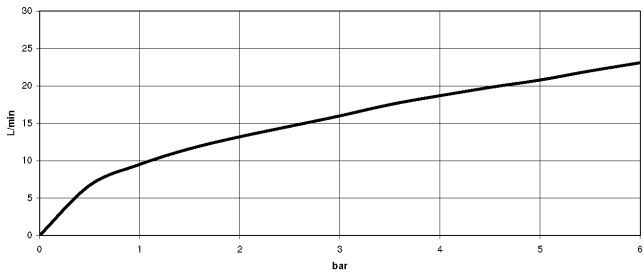
Required article



- Pressure Balance Valve -** 35 920 970 90
- Min. rough in depth 3-1/8"
 - Max. rough in depth 4-1/8"



Flow rate chart



Codes & Standards

ASME A112.18.1 cUPC



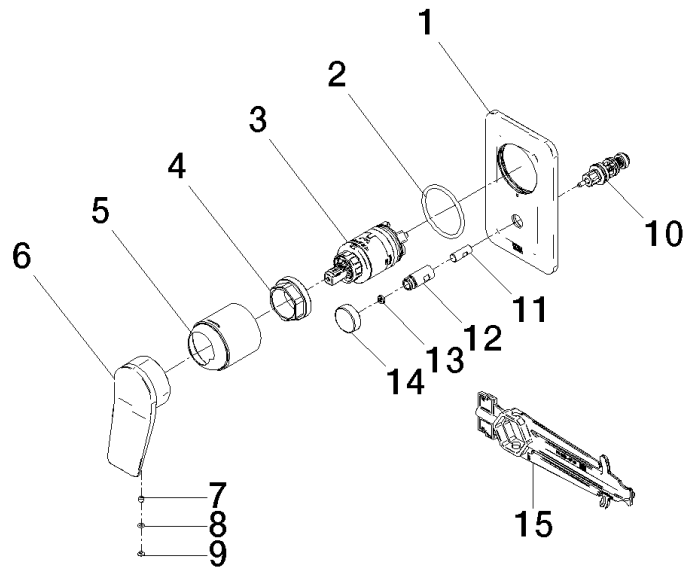
Pressure Balance Valve with diverter

LISSE

36 915 845 Product version from 5/1/2024

Certificates and sustainability

IAPMO_4976 (



Spare parts list

Number	Item Number	Designation	Number of units	Lead time
15	90 30 09 064 00 90	key	1.00	2
14	09 20 78 056-33	handle	1.00	30
6	09 20 84 022-33	handle	1.00	30
13	09 24 03 227 90	screw	1.00	2
7	90 31 11 030 00 90	pin	1.00	2
3	90 15 05 069 00 90	cartridge	1.00	2
8	09 14 10 133 90	seal	1.00	2
1	09 11 02 301-33	plate	1.00	30
4	09 24 04 448 90	nut	1.00	2
2	09 14 10 084 90	seal	1.00	2
11	09 24 03 226 90	adaptor	1.00	2
12	09 31 09 139-33	pull-rod	1.00	30
9	09 31 20 087-33	plug	1.00	60
5	09 11 02 260-33	sleeve	1.00	30
10	90 21 34 081 00 90	diverter	1.00	2