



- 7-7/8" x 6-1/4" headshower, 99 jets
- 14-1/8" x 11" body shower, 142 jets
- 23-5/8" x 18-7/8" stainless steel cover plate
- 2x 1/2" flex lines
- 4x mounting pins
- Pre-assembled stainless steel casing
- Descaling system

## Technical data:

- Max Flow rate for each rain function: 2.5 gpm
- Flow rate at a flow pressure of 3 bar with xTOOL: 10.3 gpm
- minimum working pressure = 29 Psi
- maximum working pressure = 58 Psi
- Weight: 27 lbs



## Technical data:

## Plumbing:

- Water softening device recommended
- For choosing the drainage, taking into consideration the output of items in the shower, the specific demand needs to be assessed.
- Supply line (hot/cold): 2 x 3/4"
- An individual determination of requirements is required to select the optimum device for the hot water tank, taking into account additional tapping points and the frequency of use for the BigRain.
- This product can help a building meet the requirements of Green Building Rating Systems, e.g. LEED®, BREEAM®, DGNB

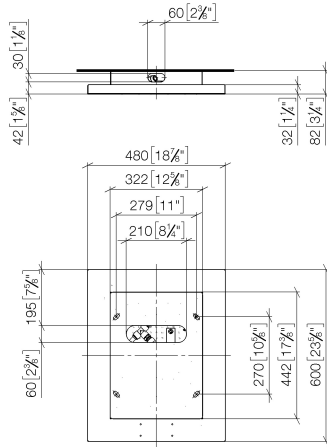
Please refer to Planning Guide for proper sizing and installation methods

To meet the North American plumbing standards, this application must be installed with a diverter (35 203 970-900010, 3-way diverter rough included and required for more restricted states).

	Stainless Steel	41 401 979-85 0010
	Brushed Stainless Steel	41 401 979-86 0010

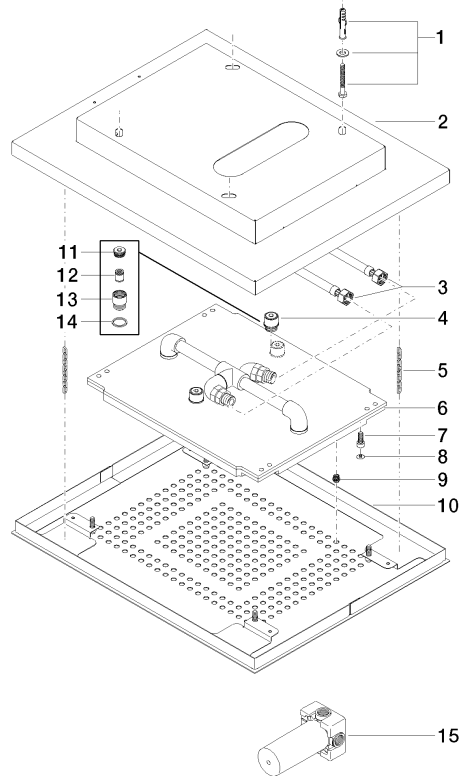
41 401 979 Product version up to 11/4/2019

mm [inches]



41 401 979 Product version up to 11/4/2019

Parts for other  
finishes can be found  
here: Brushed  
Stainless Steel



## Spare parts list

Number	Item Number	Designation	Number of units	Lead time
6	04 12 05 004 10 90	shower	1.00	-
Spare part can no longer be ordered, please order the replacement item				
2	04 17 09 001 00-85	casing	1.00	30
3	12 502 970 90	Flexible supply line 1/2" x 1/2" x 15-3/4" -	2.00	2
1	04 30 35 010 00 90	fixing set	4.00	2
9	04 29 03 036 00 90	insert	241.00	60
13	09 24 03 027 90	nipple	1.00	2
8	09 31 20 036 90	plug	4.00	2
7	09 30 30 155 90	screw	4.00	2
5	04 21 50 004 01 90	accessories	2.00	2
11	09 24 04 112 10 90	nipple	1.00	2
10	04 11 02 113 02-85	cover	1.00	30
12	09 23 01 042 90	insert	1.00	2
14	09 14 20 025 90	seal	1.00	2
4	90 24 03 027 02 90	nipple	2.00	2
15	35 104 970-90 0010	Wall mounted three-way diverter -	1.00	-
Spare part can no longer be ordered, please order the replacement item				
35203970-900010		Wall mounted three-way diverter -		