

RAINMOON Rain panel - Matte White

41 610 979



- Trim parts
- Rain panel with 2 different spray modes
- AQUACIRCLE RAIN: Circular rain curtain, flow rate max. 1.6 gpm (at 3 bar)
- TEMPEST RAIN: Natural rain, flow rate max. 1.3 gpm (at 3 bar)
- Matt white cover, RAL 9003
- Outside diameter 48-7/8", opening diameter 17-3/4"
- Descaling system
- Weight 50 lbs

Ambient lighting

- LED light: 2700 Kelvin
- Lights protected against splashing
- Technology: LED, not dimmable
- Light switch not included

Environment

- Not suitable for use in a steam room.
- Not suitable for outdoor use.
- Not suitable for use in chlorinated or salty environments.
- Observe the regulations concerning protected zones specified in DIN VDE 0100, Part 701 (IEC 60364-7-701).

To meet the North American plumbing standards, this application must be installed with a diverter (rough included). Please refer to Planning Guide for proper sizing and installation methods

To meet the North American plumbing standards, this application must be installed with a diverter (rough included).

Please refer to Planning Guide for proper sizing and installation methods

Required article

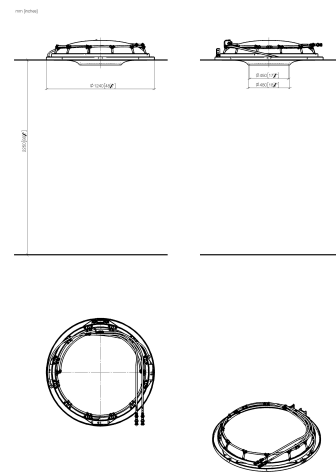


- RAINMOON Installation rough -** 35 610 970-90
- Ceiling installation housing 1356 x 1356 x 290 mm
 - Opening diameter 49-1/4"
 - Min. rough in depth "
 - Rough parts
 - Pre-assembly kit for three-way diverter included

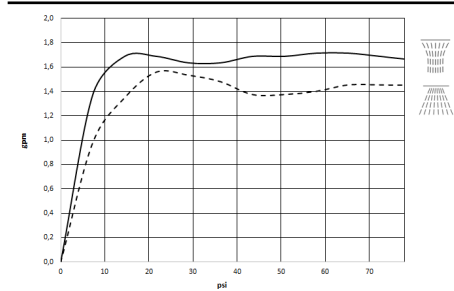


RAINMOON Rain panel - Matte White

41 610 979



Flow rate chart

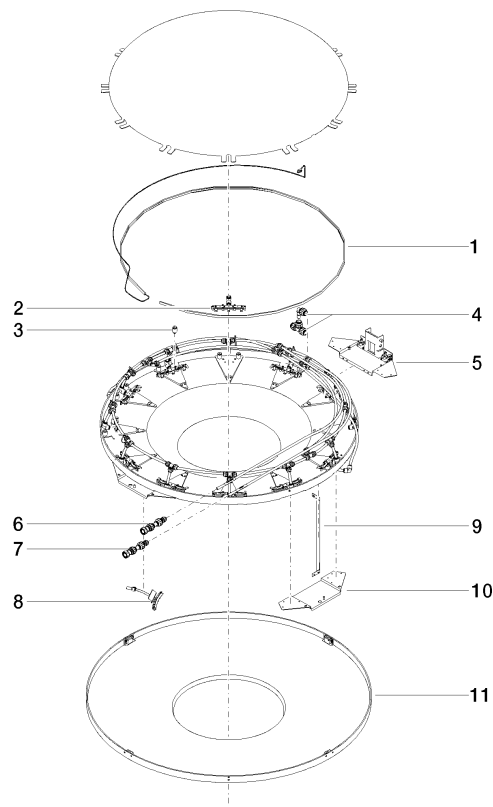


Codes & Standards

California Energy Commission (CEC) UL 1310

RAINMOON Rain panel - Matte White

41 610 979



Spare parts list

Number	Item Number	Designation	Number of units	Lead time
1	90 10 01 183 00 90	lamp	1	2
2	90 17 09 056 01 90	jet module	12	60
3	90 18 40 222 00 90	adaptor	24	2
4	90 24 04 321 00 90	threaded connector	1	2
5	90 17 20 211 00 90	joint	1	2
6	90 24 04 346 01 90	connection AQUACIRCLE	1	2
7	90 24 04 346 02 90	connection TEMPEST	1	2
8	90 17 09 057 01 90	jet module	12	2
9	90 17 20 217 00 90	holder	4	2
10	90 17 20 216 00 90	holder	3	2
11	90 11 02 325 00 90	cover	1	2