

41 615 979



- Trim parts
- Rain panel with 2 different spray modes
- AQUACIRCLE RAIN: Circular rain curtain, flow rate max. 1.6 gpm (at 3 bar)
- TEMPEST RAIN: Natural rain, flow rate max. 1.3 gpm (at 3 bar)
- Descaling system
- Matt white cover, RAL 9003

Technical data:

Electric:

Ambient lighting

Ceiling module power supply

- Lights protected against splashing
- 12V DC (CV)

Control

- Color LED light RGBW
- To be provided by the customer: Zigbee Gateway
- ZigBee Light Link RGBW Controller

Environment

Planning tips:

- Observe the regulations concerning protected zones specified in DIN VDE 0100, Part 701 (IEC 60364-7-701).
- Not suitable for outdoor use.
- Not suitable for use in a steam room.
- Not suitable for use in chlorinated or salty environments.

Notes:

- Controls not included in delivery
- Dornbracht recommends consulting a systems integrator.

**To meet the North American plumbing standards, this application must be installed with a diverter (35 203 970-900010, 3-way diverter rough included and required for more restricted states).
Cover rain panel for adaptation to ceiling colour available in all RAL colours, price and delivery time on request
Pre-assembly kit for three-way diverter included**

To meet the North American plumbing standards, this application must be installed with a diverter (35 203 970-900010, 3-way diverter rough included and required for more restricted states).

Cover rain panel for adaptation to ceiling colour available in all RAL colours, price and delivery time on request

Pre-assembly kit for three-way diverter included

41 615 979

Required article

	RAINMOON Installation rough	35 615 970-90
	With color light - <ul style="list-style-type: none"> •Rough parts •Pre-assembly kit for three-way diverter included •Ceiling installation housing 1356 x 1356 x 290 mm •Opening diameter 49-1/4" •Min. rough in depth 11-3/8" 	0010

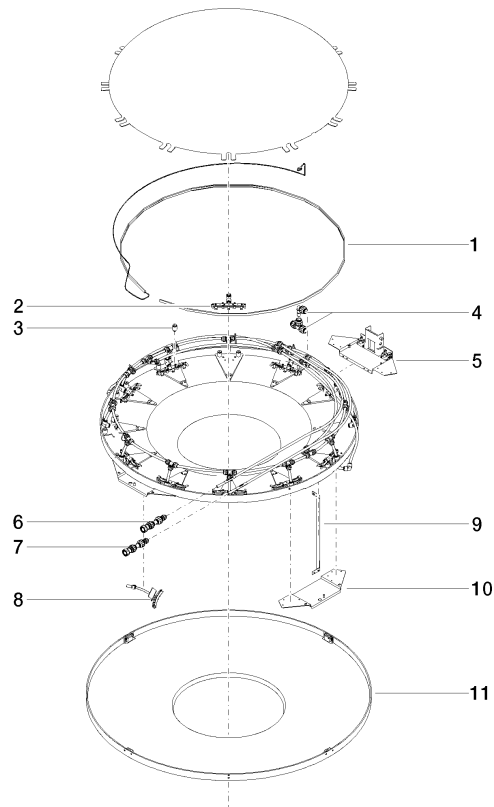


RAINMOON Rain panel With color light - Matte White

SERIES-VARIOUS

41 615 979

41 615 979



Spare parts list

Number	Item Number	Designation	Number of units	Lead time
8	90 17 09 057 01 90	jet module	12.00	2
2	90 17 09 056 01 90	jet module	12.00	60
7	90 24 04 346 02 90	connection TEMPEST	1.00	2
10	90 17 20 216 00 90	holder	3.00	2
5	90 17 20 211 00 90	joint	1.00	2
1	90 10 01 183 01 90	lamp	1.00	2
9	90 17 20 217 00 90	holder	4.00	2
11	90 11 02 325 00 90	cover	1.00	2
4	90 24 04 321 00 90	threaded connector	1.00	2
3	90 18 40 222 00 90	adaptor	24.00	2
6	90 24 04 346 01 90	connection AQUACIRCLE	1.00	2