



- Automatic cleaning feature
  - Thermal disinfection
  - Adjustable shut-off time
  - Self-calibrating high-frequency sensors
  - Solenoid valve
  - Temperature adjustment via thermostat
  - Plug-in power supply, 100-240 VAC / 12 V DC, 50-60 Hz, 18 W, incl. country-specific adaptor set
- Not compatible with sinks made of conductive materials such as steel.**  
**Use with top-mounted basins is excluded.**

**Do not use in combination with closable drains**

**ATTENTION: Separate terms and conditions for electronic articles are applicable.**

Not compatible with sinks made of conductive materials such as steel.

Use with top-mounted basins is excluded.

Do not use in combination with closable drains

ATTENTION: Separate terms and conditions for electronic articles are applicable.


Required article

	<b>eSET Touchfree Lavatory faucet with temperature adjustment for deck-mounted installation -</b>	35 740 970-90 0010
---	---	--------------------

Recommended article

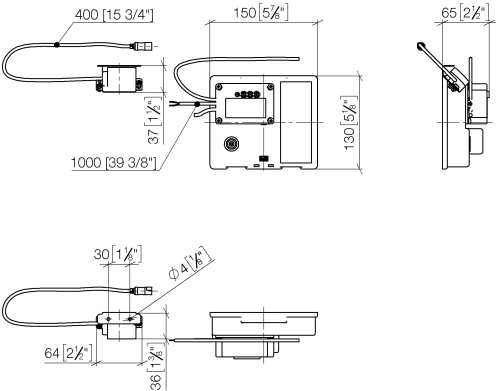
<b>Extension For Touchfree 500 mm -</b> 12 765 970 90
---

Required article

	<b>eSET Touchfree Lavatory faucet with temperature adjustment for wall-mounted installation -</b> •Max. rough in depth 4-7/8" •Min. rough in depth 3-1/2"	35 741 970-90 0010
---	---	--------------------

42 765 970 90    Product version from 3/12/2018 to 4/29/2019

mm [inches]

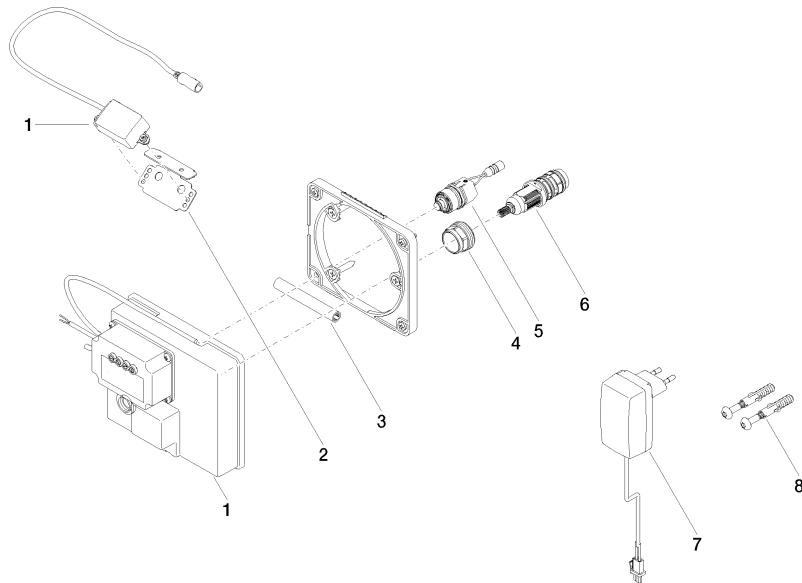


Codes & Standards

CSA C22.2 No. 14	CSA C22.2 No. 68	DIN 4109	ISO 3822
Scottish Water Byelaws	UK Water Supply Regulations	UL 1951	Ü-Zeichen

Certificates and sustainability

LGA_29	IAPMO_	CE000001_eSet_Tou chfree_20171206_D E_sig	CE000002_eSet_Tou chfree_20171206_E N_sig	LGA_29
WRAS_250302				



## Spare parts list

Number	Item Number	Designation	Number of units	Lead time
5	04 30 50 079 00 90	valve	1.00	2
6	90 15 02 013 00 90	cartridge	1.00	2
8	04 30 31 024 01 90	fixing set	1.00	2
2	90 17 20 199 00 90	holder	1.00	2
1	90 10 01 177 00 90	electronic accessories	1.00	2
4	09 23 10 129 90	nut	1.00	2
7	04 10 01 246 00 90	electronic accessories	1.00	2
3	90 23 01 124 00 90	sleeve	1.00	2