



- Infrared sensor technology
- 4-7/8" Projection
- Total height 5-1/2"
- Height to aerator/spout outlet 2"
- 1-3/8" hole diameter
- Rigid spout
- Water flow rate limited to max. 0.5 gpm
- Laminar stream
- Thermal disinfection
- Automatic shut-off after 30 seconds
- Direct temperature control at faucet
- Plug-in power supply included
- lead-free
- 2 x pressure hose with 3/8" compression fitting
- This product can help a building meet the requirements of Green Building Rating Systems, e.g. LEED®, BREEAM®, DGNB

NOTE: A tempering device is recommended for installation in public areas. Please refer to your local building codes.

	Champagne (22kt Gold)	44 511 660-47 0010
	Chrome	44 511 660-00 0010
	Brushed Platinum	44 511 660-06 0010
	Platinum	44 511 660-08 0010
	Dark Chrome	44 511 660-19 0010
	Light gold	44 511 660-26 0010
	Brushed Light Gold	44 511 660-27 0010
	Matte Black	44 511 660-33 0010
	Brushed Dark Brass	44 511 660-39 0010
	Brushed Bronze	44 511 660-42 0010
	Brushed Champagne (22kt Gold)	44 511 660-46 0010
	Brushed Chrome	44 511 660-93 0010
	Brushed Dark Platinum	44 511 660-99 0010

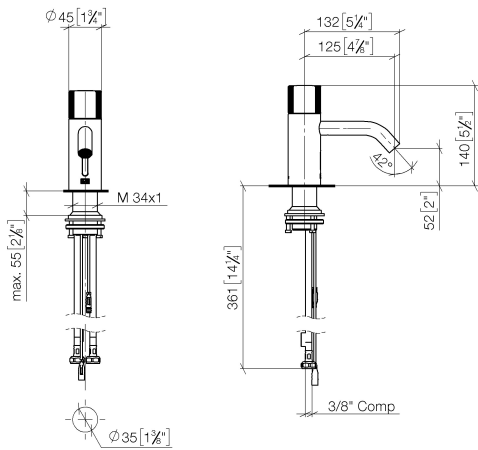


META Lavatory Touchfree Faucet without drain - Champagne (22kt Gold)

META

44 511 660    Product version from 7/1/2023

mm [inches]



Codes & Standards

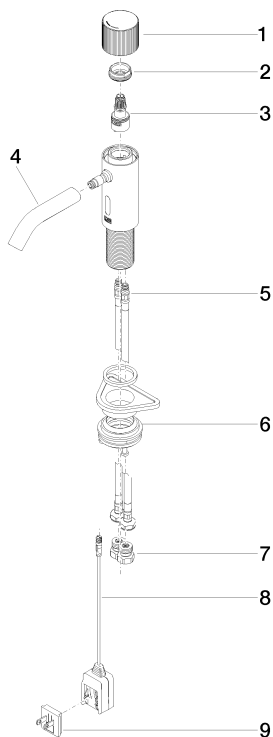
ASME A112.18.1	California Energy Commission (CEC)	cUPC	NSF372
----------------	------------------------------------	------	--------

Certificates and sustainability

IAPMO\_6397    IAPMO\_4976 (

44 511 660 Product version from 7/1/2023

Parts for other  
finishes can be found  
here: [Chrome](#)



## Spare parts list

Number	Item Number	Designation	Number of units	Lead time
3	90 90 03 173 00 90	top	1.00	2
4	90 11 06 206 02-47	spout	1.00	30
1	90 20 66 124 00-47	handle	1.00	30
5	04 30 04 100 00 90	hose	2.00	2
9	90 10 01 254 00 90	electronic accessories	1.00	2
6	04 23 10 044 08 90	fixing set	1.00	2
8	90 10 01 253 00 90	power supply	1.00	2
7	90 24 03 314 10 90	nipple set	2.00	2
2	09 24 04 562 90	nut	1.00	60