

Soap dispenser with flange - Brushed Platinum








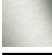

SERIES-VARIOUS

82 439 970 Product version from 4/1/2025



- 4-7/8" Projection
- 16.91 oz bottle capacity
- Refillable above countertop
- 360° swivel
- Height 4-7/8"
- 1" hole diameter
- Individual flanges 2-1/8" x 2-1/8"

Fits LOT

	Brushed Platinum	82 439 970-06
	Chrome	82 439 970-00
	Platinum	82 439 970-08
	Durabrand (23kt Gold)	82 439 970-09
	Dark Chrome	82 439 970-19
	Brushed Durabrand (23kt Gold)	82 439 970-28
	Brushed Bronze	82 439 970-42
	Brushed Champagne (22kt Gold)	82 439 970-46
	Champagne (22kt Gold)	82 439 970-47
	Brushed Chrome	82 439 970-93
	Brushed Dark Platinum	82 439 970-99

Soap dispenser with flange - Brushed Platinum

SERIES-VARIOUS

82 439 970 Product version from 4/1/2025

mm [inches]

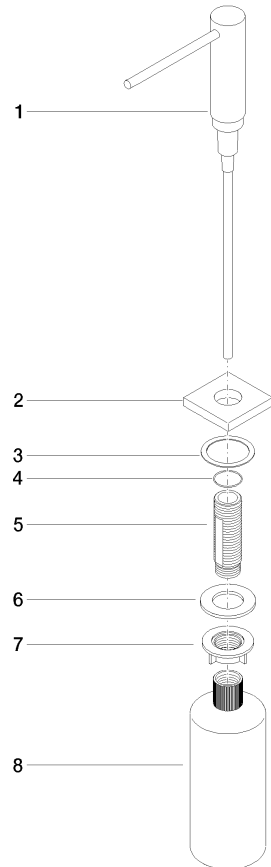


Soap dispenser with flange - Brushed Platinum

SERIES-VARIOUS

82 439 970 Product version from 4/1/2025

Parts for other
finishes can be found
here: [Chrome](#)



Spare parts list

Number	Item Number	Designation	Number of units	Lead time
5	08 10 10 527 90	holder	1.00	2
3	08 10 10 624 90	disc	1.00	2
4	09 14 10 151 90	seal	1.00	2
6	09 14 05 014 90	seal	1.00	2
1	90 10 10 538 00-06	dispenser	1.00	40
7	08 10 10 517 90	nut	1.00	2
2	08 27 97 505-06	rosette	1.00	10
8	90 10 10 603 00 90	container	1.00	2