



Soap dispenser with flange - Durabrand (23kt Gold)

SERIES-VARIOUS

82 439 970 Product version from 4/1/2025



- 4-7/8" Projection
- 16.91 oz bottle capacity
- Refillable above countertop
- 360° swivel
- Height 4-7/8"
- 1" hole diameter
- Individual flanges 2-1/8" x 2-1/8"

Fits LOT

| | | |
|---|-------------------------------|---------------|
|  | Durabrand (23kt Gold) | 82 439 970-09 |
|  | Chrome | 82 439 970-00 |
|  | Brushed Platinum | 82 439 970-06 |
|  | Platinum | 82 439 970-08 |
|  | Dark Chrome | 82 439 970-19 |
|  | Brushed Durabrand (23kt Gold) | 82 439 970-28 |
|  | Brushed Bronze | 82 439 970-42 |
|  | Brushed Champagne (22kt Gold) | 82 439 970-46 |
|  | Champagne (22kt Gold) | 82 439 970-47 |
|  | Brushed Chrome | 82 439 970-93 |
|  | Brushed Dark Platinum | 82 439 970-99 |

Soap dispenser with flange - Durabrand (23kt Gold)

SERIES-VARIOUS

82 439 970 Product version from 4/1/2025

mm [inches]

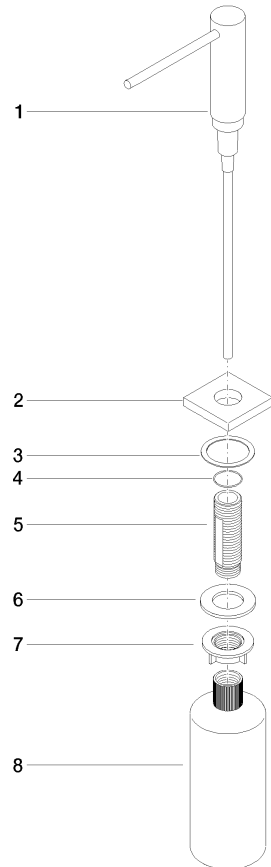


Soap dispenser with flange - Durabrace (23kt Gold)

SERIES-VARIOUS

82 439 970 Product version from 4/1/2025

Parts for other
finishes can be found
here: [Chrome](#)



Spare parts list

| Number | Item Number | Designation | Number of units | Lead time |
|--------|--------------------|-------------|-----------------|-----------|
| 5 | 08 10 10 527 90 | holder | 1.00 | 2 |
| 3 | 08 10 10 624 90 | disc | 1.00 | 2 |
| 1 | 90 10 10 538 00-09 | dispenser | 1.00 | 40 |
| 4 | 09 14 10 151 90 | seal | 1.00 | 2 |
| 2 | 08 27 97 505-09 | rosette | 1.00 | 40 |
| 7 | 08 10 10 517 90 | nut | 1.00 | 2 |
| 6 | 09 14 05 014 90 | seal | 1.00 | 2 |
| 8 | 90 10 10 603 00 90 | container | 1.00 | 2 |