

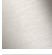






83 200 361 Product version from 7/3/2016

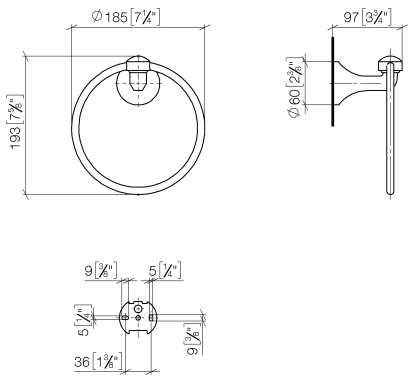


- Width 7-1/4"
- Flange diameter 2-3/8"
- 3-7/8" Projection

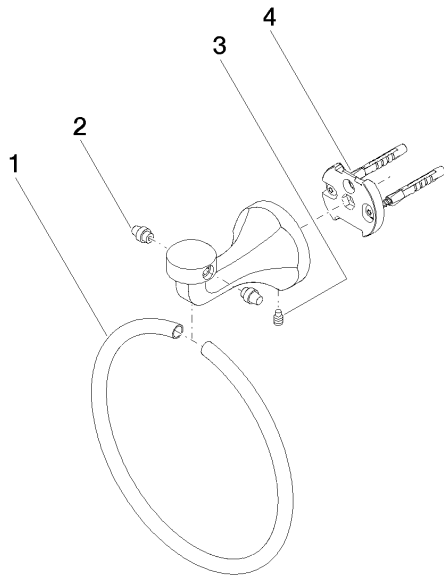
| | | |
|---|-------------------------------|---------------|
|  | Platinum | 83 200 361-08 |
|  | Chrome | 83 200 361-00 |
|  | Brushed Platinum | 83 200 361-06 |
|  | Durabrand (23kt Gold) | 83 200 361-09 |
|  | Brushed Durabrand (23kt Gold) | 83 200 361-28 |
|  | Brushed Dark Brass | 83 200 361-39 |
|  | Brushed Dark Platinum | 83 200 361-99 |

83 200 361 Product version from 7/3/2016

mm [inches]



Parts for other finishes can be found here: [Chrome](#)



Spare parts list

| Number | Item Number | Designation | Number of units | Lead time |
|--------|--------------------|-------------|-----------------|-----------|
| 3 | 04 31 11 140 00 90 | pin | 1.00 | 2 |
| 1 | 08 18 80 503-08 | ring | 1.00 | 40 |
| 4 | 05 17 97 507 00 90 | fixing set | 1.00 | 2 |
| 2 | 08 31 20 550 90 | plug | 2.00 | 2 |