

Hook two-piece - Matte Black

SERIES SPECIFIC

83 256 979

Product version from 11/1/2004



- Width 3-1/8"
- Flange diameter 1-5/8"
- 2-1/8" Projection

Fits ELIO, ENO, MEM, META SQUARE, SYNC and TARA ULTRA

	Matte Black	83 256 979-33
	Chrome	83 256 979-00
	Brushed Platinum	83 256 979-06
	Dark Chrome	83 256 979-19
	Brushed Durabrass (23kt Gold)	83 256 979-28
	Brushed Bronze	83 256 979-42
	Brushed Champagne (22kt Gold)	83 256 979-46
	Champagne (22kt Gold)	83 256 979-47
	Brushed Chrome	83 256 979-93
	Brushed Dark Platinum	83 256 979-99

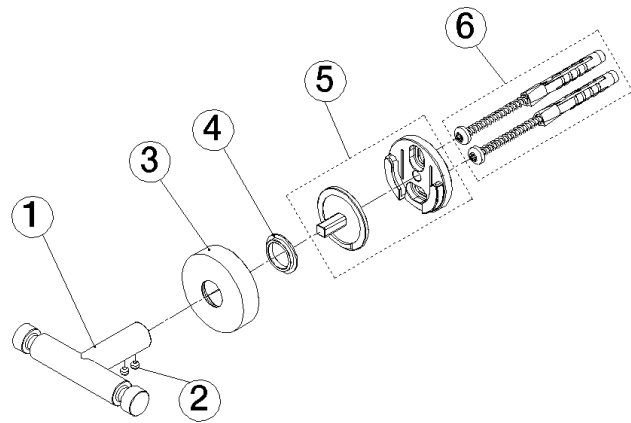
83 256 979 Product version from 11/1/2004

mm [inches]



83 256 979    Product version from 11/1/2004

Parts for other  
 finishes can be found  
 here: [Chrome](#)



Spare parts list

Number	Item Number	Designation	Number of units	Lead time
6	05 30 31 025 00 90	fixing set	1.00	2
4	08 30 11 516 90	ring	1.00	2
1	05 18 60 519 01-33	hook	1.00	30
3	08 27 97 500-33	rosette	1.00	30
2	90 31 11 038 00 90	pin	2.00	2
5	05 17 97 501 01 90	holder	1.00	2