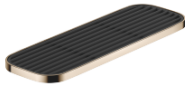


**Shelf wall-mounted - Champagne (22kt Gold)**

SERIES SPECIFIC

83 482 970 Product version from 10/1/2023



- Width 11-3/4"
- Height 1"
- 3-7/8" Projection
- screen insert required, to be ordered separately

|   |                               |               |
|---|-------------------------------|---------------|
|    | Champagne (22kt Gold)         | 83 482 970-47 |
|    | Chrome                        | 83 482 970-00 |
|    | Brushed Platinum              | 83 482 970-06 |
|    | Platinum                      | 83 482 970-08 |
|    | Dark Chrome                   | 83 482 970-19 |
|    | Light gold                    | 83 482 970-26 |
|    | Brushed Light Gold            | 83 482 970-27 |
|    | Brushed Durabrass (23kt Gold) | 83 482 970-28 |
|    | Matte Black                   | 83 482 970-33 |
|   | Brushed Dark Brass            | 83 482 970-39 |
|  | Brushed Bronze                | 83 482 970-42 |
|  | Brushed Champagne (22kt Gold) | 83 482 970-46 |
|  | Brushed Chrome                | 83 482 970-93 |
|  | Brushed Dark Platinum         | 83 482 970-99 |

**Required article**

**Screen insert - Matte Black** 82 482 970-33  
 • Inserts made out of plastic

**Required article**

**Screen insert - cream white** 82 482 970-51  
 • Inserts made out of plastic

**Required article**

**Screen insert - light gray** 82 482 970-52  
 • Inserts made out of plastic

**Required article**

**Screen insert - taupe** 82 482 970-53  
 • Inserts made out of plastic

## Shelf wall-mounted - Champagne (22kt Gold)

SERIES SPECIFIC

83 482 970 Product version from 10/1/2023

mm [inches]



83 482 970    Product version from 10/1/2023

Parts for other  
 finishes can be found  
 here: [Chrome](#)



Spare parts list

| Number | Item Number        | Designation | Number of units | Lead time |
|--------|--------------------|-------------|-----------------|-----------|
| 2      | 05 30 31 002 00 90 | fixing set  | 1.00            | 2         |
| 1      | 90 30 30 520 00-47 | set         | 1.00            | 30        |
| 3      | 08 17 97 578-47    | holder      | 1.00            | 30        |