








MADISON Tissue holder without cover - Chrome
MADISON

83 500 361
Product version from 7/3/2016



- Width 5-3/4"
- Height 4-3/4"
- 3-3/4" Projection

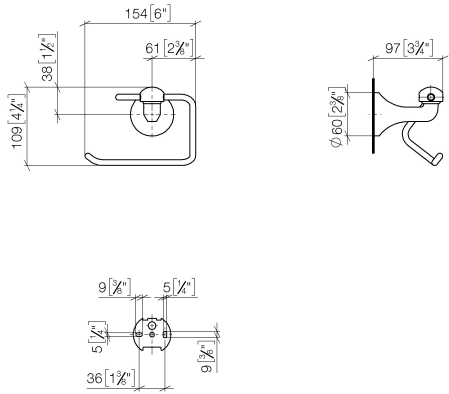
	Chrome	83 500 361-00
	Brushed Platinum	83 500 361-06
	Platinum	83 500 361-08
	Durabrand (23kt Gold)	83 500 361-09
	Brushed Durabrand (23kt Gold)	83 500 361-28
	Brushed Dark Brass	83 500 361-39
	Brushed Dark Platinum	83 500 361-99

MADISON Tissue holder without cover - Chrome

MADISON

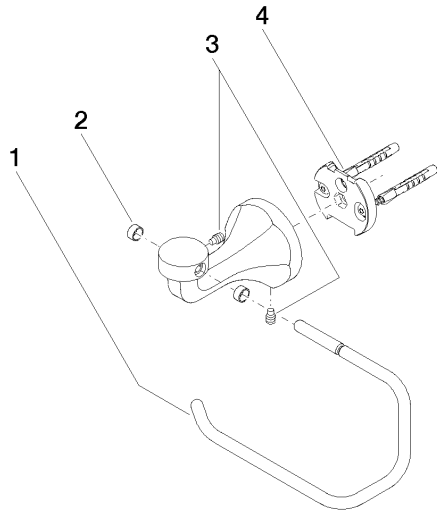
83 500 361 Product version from 7/3/2016

mm [inches]



83 500 361 Product version from 7/3/2016

Parts for other
finishes can be found
here: Brushed
Platinum



Spare parts list

Number	Item Number	Designation	Number of units	Lead time
3	04 31 11 140 00 90	pin	2.00	2
1	08 18 70 501-00	bow	1.00	10
2	08 18 40 505 90	sleeve	2.00	2
4	05 17 97 507 00 90	fixing set	1.00	2