



CL.1 Tissue holder without cover - Brushed Platinum

CL.1

83 500 705    Product version from 3/9/2015



- Width 7-7/8"
- Height 1-3/8"
- 2-3/4" Projection

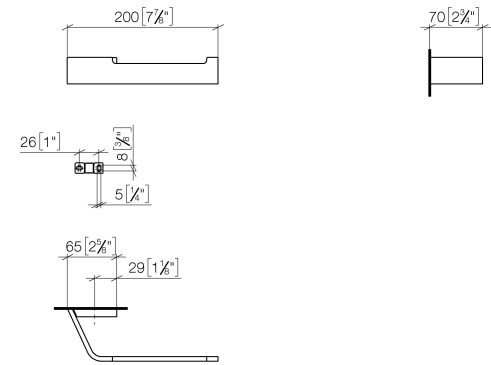
	Brushed Platinum	83 500 705-06
	Chrome	83 500 705-00
	Dark Chrome	83 500 705-19
	Brushed Champagne (22kt Gold)	83 500 705-46
	Champagne (22kt Gold)	83 500 705-47
	Brushed Dark Platinum	83 500 705-99

**CL.1 Tissue holder without cover - Brushed Platinum**

CL.1

83 500 705 Product version from 3/9/2015

mm [inches]

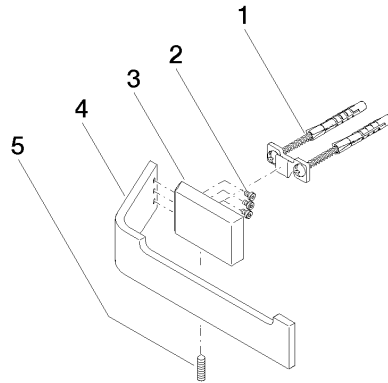


**CL.1 Tissue holder without cover - Brushed Platinum**

CL.1

83 500 705 Product version from 3/9/2015

Parts for other  
finishes can be found  
here: [Chrome](#)



**Spare parts list**

Number	Item Number	Designation	Number of units	Lead time
4	08 17 70 553-06	holder	1.00	10
2	09 30 30 191 90	screw	3.00	2
3	08 17 70 500-06	holder	1.00	10
1	05 17 20 758 00 90	fixing set	1.00	2
5	04 31 11 113 00 90	pin	1.00	2