

## TARA Tissue holder without cover - Brushed Champagne (22kt Gold)

TARA

83 500 892 Product version from 4/1/2024



- Width 6"
- Height 3-7/8"
- Flange diameter 2-1/8"
- 2-7/8" Projection

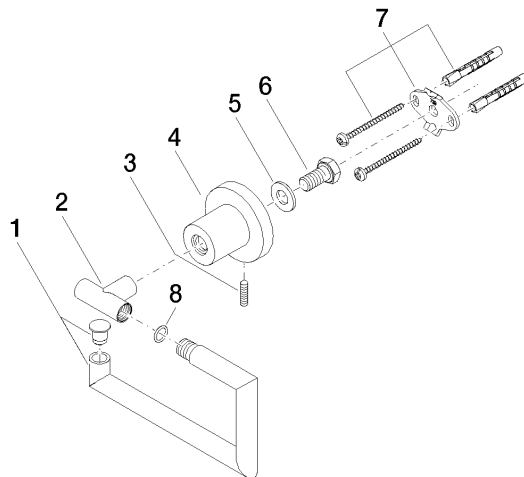
	Brushed Champagne (22kt Gold)	83 500 892-46
	Chrome	83 500 892-00
	Brushed Platinum	83 500 892-06
	Platinum	83 500 892-08
	Dark Chrome	83 500 892-19
	Brushed Durabronze (23kt Gold)	83 500 892-28
	Matte Black	83 500 892-33
	Brushed Bronze	83 500 892-42
	Champagne (22kt Gold)	83 500 892-47
	Brushed Chrome	83 500 892-93
	Brushed Dark Platinum	83 500 892-99

mm [inches]



83 500 892 Product version from 4/1/2024

Parts for other  
finishes can be found  
here: [Chrome](#)



## Spare parts list

Number	Item Number	Designation	Number of units	Lead time
5	09 30 11 046 90	disc	1.00	2
1	90 28 22 640 00-46	holder	1.00	30
8	09 14 10 042 90	seal	1.00	2
2	05 17 89 552 00-46	holder	1.00	30
4	08 17 89 505-46	holder	1.00	30
3	04 31 11 113 00 90	pin	1.00	2
6	09 30 30 071 90	screw	1.00	2
7	05 17 20 739 00 90	fixing set	1.00	2