

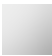







# MADISON Tissue holder with cover - Chrome

83 510 361    Product version from 7/3/2016



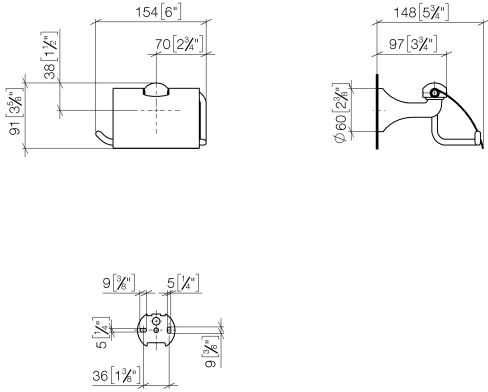
- Width 5-3/4"
- Height 3-1/2"
- 5-7/8" Projection

	Chrome	83 510 361-00
	Brushed Platinum	83 510 361-06
	Platinum	83 510 361-08
	Durabrass (23kt Gold)	83 510 361-09
	Brushed Durabrass (23kt Gold)	83 510 361-28
	Brushed Dark Platinum	83 510 361-99

**MADISON Tissue holder with cover - Chrome**

83 510 361 Product version from 7/3/2016

mm [inches]



# MADISON Tissue holder with cover - Chrome

83 510 361    Product version from 7/3/2016

Parts for other  
finishes can be found  
here: Brushed  
Platinum



## Spare parts list

Number	Item Number	Designation	Number of units	Lead time
1	08 11 02 508-00	lid	1	10
2	08 18 40 505 90	sleeve	2	2
3	04 31 11 140 00 90	pin	2	2
4	05 17 97 507 00 90	fixing set	1	2
5	08 18 70 501-00	bow	1	10