

Tissue holder with cover - Chrome

SERIES SPECIFIC

83 510 979 Product version from 7/1/2023



- Width 5-7/8"
- Height 3-3/4"
- Flange diameter 1-5/8"
- 1-5/8" Projection

	Chrome	83 510 979-00
	Brushed Platinum	83 510 979-06
	Dark Chrome	83 510 979-19
	Light gold	83 510 979-26
	Brushed Light Gold	83 510 979-27
	Matte Black	83 510 979-33
	Brushed Dark Brass	83 510 979-39
	Brushed Bronze	83 510 979-42
	Brushed Champagne (22kt Gold)	83 510 979-46
	Champagne (22kt Gold)	83 510 979-47
	Brushed Chrome	83 510 979-93
	Brushed Dark Platinum	83 510 979-99

Tissue holder with cover - Chrome

SERIES SPECIFIC

83 510 979 Product version from 7/1/2023

mm [inches]

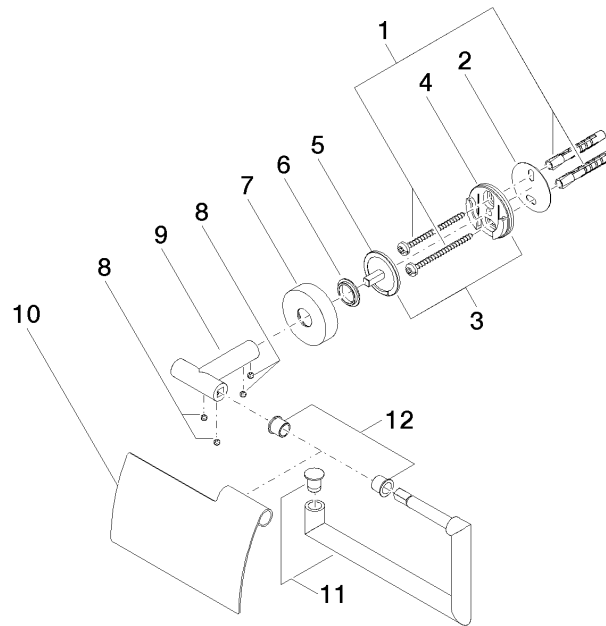


Tissue holder with cover - Chrome

SERIES SPECIFIC

83 510 979 Product version from 7/1/2023

Parts for other
finishes can be found
here: Brushed
Platinum



Spare parts list

Number	Item Number	Designation	Number of units	Lead time
3	05 17 97 501 01 90	holder	1.00	2
7	08 27 97 500-00	rosette	1.00	10
10	08 11 02 514-00	lid	1.00	10
4	08 17 97 501 07	holder	1.00	2
1	05 30 31 025 00 90	fixing set	1.00	2
9	05 17 97 562 01-00	holder	1.00	10
6	08 30 11 516 90	ring	1.00	2
5	08 17 97 559 90	holder	1.00	2
11	90 28 22 628 00-00	holder	1.00	10
2	05 30 11 519 00 90	disc	1.00	2
8	90 31 11 038 00 90	pin	4.00	2
12	08 18 40 501 90	sleeve	1.00	2